



Parade of Homes

Fall 2023



The Comfort of Home
WITH THE BENEFITS OF NEW

NewHomesWichita.com

SATURDAYS & SUNDAYS NOON TO 6 PM | SEPT 30 - OCT 1, OCT 7 - 8 & OCT 14 - 15



TOP-QUALITY PRODUCTS. EXPERT-LED GUIDANCE.

Our team is driven to deliver for our customers and help solve today's toughest challenges. We offer expert advice as you shop our extensive selection of windows, doors, millwork, cabinetry, siding, and more for your next project.

VISIT OUR WEBSITE OR ONE OF
OUR NEARBY LOCATIONS TODAY.

[BLDR.COM](https://www.blDR.com)



801 S Meridian Ave • Valley Center, KS 67147

OWN IT.

Whether it's your first home or your dream home, a downsize or an upgrade, making sure you have the right type of loan is the first step. Our experienced lenders have access to more options and can help you decide which one is right for you. With branch offices and partner locations throughout Wichita, there's always a lender close by, ready to provide you with quick, efficient and helpful guidance so you can go from dreaming about it to owning it.

WE CAN'T WAIT TO HELP YOU MOVE

BRAVELY ONWARD.®



CANDEE KRETCHMAR
NMLS 468582



CLAUDETTE BROWN
NMLS 840074



DANA HIGH
NMLS 468581



DAVID W. GRAHAM
NMLS 522103



CHRIS HOTT
NMLS 2053904



MATTHEW FULKS
NMLS 1901090



OSBALDO MORENO
NMLS 2152185



JOSH MCGLOTHLIN
NMLS 488032



SHANNON EGAN
NMLS 265803



AJ DUNMIRE
NMLS 2027574



TAYLOR WARD
NMLS 1517409



fidelitybank.com
844.277.2163



Fidelity
BANK



East WICHITA

WELL & PUMP SERVICE

Well Drilling, Service & Repairs

Call for Free Estimates

KWWC License #943 • Bonded & Insured!

316-644-1401

www.eastwichitawell.com



Wichita Owned and Operated since 1958

Windows & Doors



Your Wichita Pella team is ready to show you the right window or door for your home and budget. Whether wood, vinyl, or fiberglass, let our team find the best product that fits your vision. Pella can help support the completion of your project from concept to installation. Your home is unique, so you shouldn't have to settle for an ordinary window or door.

Call today for your free consultation 316-686-6900 or Toll Free 1-877-807-5593

METRO

APPLIANCES & MORE

12 MONTH
NO INTEREST
FINANCING

Free Local Delivery
—
60 Brands of Appliances

3545 N. Hillside, Wichita, KS
(316) 941-4040
MetroAppliancesAndMore.com



Why Buy New Top 10

- 10) MORE SPACE - Kids, pets, hobbies, in-laws. Do we really need to say more?
- 9) GO GREEN - Today's new homes are increasingly energy-efficient and are constructed with resource conserving materials and techniques to save you money.
- 8) COOL AMENITIES - Gourmet kitchen, mini-spa bathroom, home theater. You want it, you got it! It's all about you.
- 7) LEVERAGE PAYS - Earn returns based on the total value of the property. Plus you get to live there! What's not to like?
- 6) BUILD EQUITY - College expenses, consumer goods, retirement. Your 401k should be so useful.
- 5) LOW FINANCING - Lenders are anxious to work with you to find the best rates available.
- 4) GREAT SELECTION - New homes in new home communities located throughout the greater Wichita and surrounding areas means more choices, in more locations, at varying price points.
- 3) TAX BREAKS - Your kindly Uncle Sam knows homeownership benefits the nation and encourages it through deductions for mortgage interest and state and local property taxes.
- 2) MORE FOR YOUR MONEY - Area builders offer the most desirable styles and floor plans, the latest state of the art interior/exterior components and quality of life features.
- 1) TIME IS RIGHT - Wichita area economy is stable, strong and growing. Investing in a new home now equals benefits now and in the future.





Parade of Homes

Fall 2023

Welcome to the 2023 Fall Parade of Homes, a three-weekend event for everyone interested in homeownership. The Parade is the absolute best opportunity to tour new homes, on display from noon to 6 p.m. each Saturday and Sunday, Sept. 30-Oct. 1, Oct. 7-8 and Oct. 14-15.

There's nothing like this person-to-person new home experience.

Representatives of builders will be there to visit with you about any of your home buying concerns. These experts are current on everything you could ask about:

- New homes on display in new home communities
- The builders chosen to build in new home communities
- What's planned for specific new home communities and surrounding areas
- Advantages of buying/building a newly constructed home versus a used home, or renting
- Why there has never been a better time to buy a new home

The Parade will showcase 124 new homes constructed by 49 of the area's leading builders in 41 new home communities, from \$201,000 to over \$1,700,000 – a full spectrum of newly constructed homes, in the area's most desirable new home communities, priced for exceptional value and investment.

Maybe you didn't know this...

Today's homebuyers consider home ownership the single best long-term investment and a primary source of financial security – especially as home values continue to strengthen. Recent research, local and national, back it up. Through economic ups-and-downs, homeownership endures as the foundation of the American Dream.

Come see the "best of the best" area builders have to offer during the Fall Parade of Homes. You'll be glad you did.

Sincerely,

Wess

Wesley E. Galyon
President | CEO
Wichita Area Builders Association
316-265-4226
NewHomesWichita.com



NEW NEVER LOOKED BETTER!

Anyone in the market to buy a home owes it to themselves to consider the many advantages of "buying new". The reason? Today's new homes offer more benefits than ever before. Here's a quick list of some of the main reasons why so many home buyers prefer new homes to used houses.

- **Design Your Dream Home Your Way:** Why settle for someone else's choices when you can select your favorite home components that reflect your style – not someone else's taste.
- **Choose a Floor Plan and Room Layout that Meets Your Needs:** Buying a new home accommodates buyers being able to make decisions that create and provide the type of environment within which you want to live - now and in the future.
- **All New, Under Warranty:** In a new home the products that comprise it are brand-new, and under warranty. Although not required by law, most Wichita area builders offer one-year written warranties that outline what will be specifically addressed if any problem occurs with your home within a one-year time frame following the purchase of the home.
- **Energy and Cost Savings:** Today's new homes are far more energy efficient than homes built just a few short years ago. New home buyers enjoy the benefits of better performing products due to more recent technological advancements in product design, durability, and ease of use.
- **Comfort and Indoor Air Quality:** Today's new homes meet stringent energy standards not in place in the past resulting in year-round, draft-free comfort and much improved indoor air quality.
- **Low Maintenance:** Today's new homes are constructed of cutting-edge building products that require less care and maintenance, which lowers homeowner occupancy costs over the higher costs typically incurred when buying a used house.

- **Community Amenities:** Today's new homes are built in covenant protected state-of-the-art new home communities featuring amenities homeowners want and value.
- **Advanced Technology and Design:** Cabinets, appliances, high efficiency furnace and air conditioners, bathroom fixtures, windows, flooring, volume ceilings, trim features, electric circuitry with advanced safety features, and more are among the many reasons to build your new home your way, to reflect the way you want to live.
- **That New Home Feel:** A used house was someone else's dream, not yours. It reflects their choices and family members tastes, not yours. You may learn to love the color of older appliances, worn counter tops, outdated appliance and light fixtures, flooring, etc., but more and more people prefer, and are opting for, that never lived-in feel.

If you are in the market to buy a home now, or in the near future, why settle for less?

Today's new homes offer the latest designs, style, comfort and quality. They provide a care-free lifestyle so that you can enjoy your home and not have to worry about what might break or go wrong next that will require you to hire someone to fix it, or you will have to work on it yourself, when you could be spending your time with family or doing something else you enjoy.

When you buy a home you want to make sure you receive the value you want and deserve relative to the price you are willing to pay... "Today is the Best Time to Look into a New Home."

FOUND YOUR PERFECT HOME?
A Pre-Approval from CapFed®
makes it so much easier.

APPLY ONLINE



capfed.com/applynowwichita



Capitol
Federal®

1-888-8CAPFED
316-689-3104



Nine Greater Wichita
Locations to serve you
- including Derby,
Andover and Maize.

New Homes Benefit More Than Just Buyers and Builders

The only people who benefit when a house is built are the family members who get to live there, and the builder who constructed and sold the home, right?

Wrong. The positive impact of new residential construction is far-reaching, bringing benefits to families, businesses and services throughout a community immediately, as well as for years to come.

According to economists at the National Association of Home Builders, the one-year estimated local impacts of building 100 single-family homes in a typical metro area include \$21.1 million in local income, \$2.2 million in taxes and other local government revenue, and 324 local jobs.

But what does that economic impact mean in the real, day-to-day lives of community residents?

Just think about it. When a family moves to a community and buys a new house, they will likely shop at local stores to buy furniture and accessories to decorate the home. They will fill their car's gas tank at local gas stations so they can get to the stores, have local mechanics work on the car when it breaks down or needs the oil changed, or buy a new car at a local dealer when it's time to replace the old one.

The family may need to hire local companies for

regular services to maintain their home, such as landscaping, house cleaning, pet sitters or pool upkeep.



Every Step of the Way

Ready to make your move? Wherever you are on your homeownership journey, we are here to help with local servicing and competitive rates. **Contact the Meritrust Home Loans team today.**

Scan to learn more!




Meritrust HOME LOANS SM

Subject to approval.

YOUR LOCAL GARAGE IMPROVEMENT EXPERTS



GarageExperts[®]
Epoxy Flooring · Cabinets · Storage

FREE ESTIMATES

GarageExperts of Wichita 316.867.9720
GarageExperts.com/wichita

Visit hcu.coop/homeloans 



Break Ground

Ready to build the home of your dreams? Our Real Estate Loan Consultants are here to help you every step of the way.

Steve Farmer
Real Estate Loan Consultant | NMLS# 492459
Steve.Farmer@hcu.coop | 316-221-8649



New Homes Benefit More Than Just Buyers and Builders continued

The children will enroll in local schools. This increases enrollment, meaning more teachers, janitors, cafeteria workers and other school support staff will need to be hired. Those kids will also join sports leagues and other activities, buy equipment and pay registration fees that provide stipends for referees and coaches.

All of this economic activity puts income into the pockets of local business owners and their families, who can then afford to go out and spend money themselves, which recycles even more money into the community's economy.

The new family also pays local and state taxes. These tax revenues help pay for a wide range of government services, including school teachers, police departments, refuse collection, parks maintenance and road repairs.

Over the long term, as the families who move into new homes become part of the community, their positive impact continues. NAHB estimates that those 100



new homes also provide the community with additional, annually-recurring impacts of \$3.1 million in local income, \$743,000 in taxes and other revenue for local governments, and 53 local jobs.

Families who buy a newly built home enjoy benefits including safety, amenities, energy efficiency and floor plans to fit a modern lifestyle. But the advantages of new homes extend far beyond the buyers and the builders—residential construction has a positive, direct impact on the local community for years.



Security 1st Title

We Protect Property Rights.

Security 1st Title offers licensed and trained professionals to assist you with your title and closing needs. Our local experienced staff delivers exceptional service to protect property rights of homeowners and lenders.

TITLE INSURANCE | CLOSINGS

1031 EXCHANGE | CONTRACT SERVICING

VISIT US ONLINE AT **SECURITY1ST.COM**



Brandy Mitchell
Sales Manager | NMLS #556729

(316) 990-2440

brandy.mitchell@academymortgage.com
academymortgage.com/brandymitchell



Take the first step and call me today!
Corp NMLS #3113 | Equal Housing Lender

1

JK Blue Living, LLC

Shown by: J Russell Communities

10405 W. Basil

Southern Ridge

The Elliana by JK Blue Living is a split floor plan with plenty of natural light. Luxury touches includes floor-to-ceiling shiplap fireplace, custom stair railing and vaulted ceilings. This 5 bedroom, 3 bath home is sure to impress. Pick your homesite and customize yours!



JRussellCommunities.com

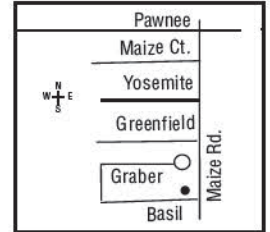
Above Ground Sq. Ft.: 1477
Total Sq. Ft.: 2677

School: Goddard

Price Range: \$351-400,000

License #11031

Phone: 316-737-9755



2

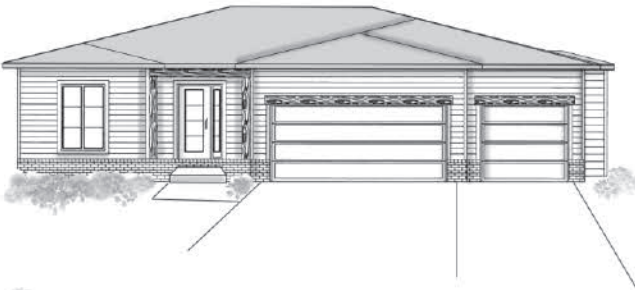
Kreutzer Homes, Inc.

Shown by: J Russell Communities

10409 W. Basil

Southern Ridge

Kreutzer Homes "Kinley" will wow you with its huge deck. This split plan has 5 bedrooms and 3 baths. Upstairs you'll find the perfect master suite with his/her sinks and closets. Downstairs, a full bar will meet all your entertaining needs. Put your own spin on the Kinley today!



JRussellCommunities.com

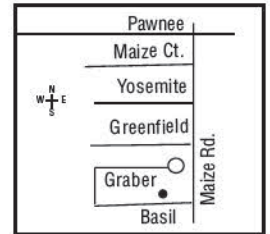
Above Ground Sq. Ft.: 1434
Total Sq. Ft.: 2598

School: Goddard

Price Range: \$351-400,000

License #3344

Phone: 316-737-9755



3

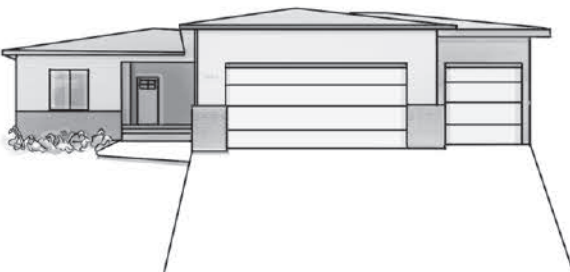
RJ Castle Custom Homes

Shown by: J Russell Communities

10413 W. Basil

Southern Ridge

The Baby Bella by RJ Castle has 4 bedrooms and 3 baths and a drive-through 3 car garage. This kitchen was built for those that love to cook! Host game night by the bar or enjoy the weather on the oversized patio. Need a 4th car garage? Personalize your own Baby Bella.



JRussellCommunities.com

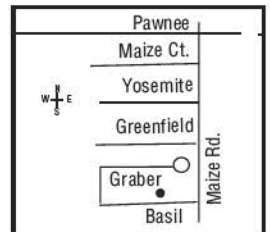
Above Ground Sq. Ft.: 1400
Total Sq. Ft.: 2600

School: Goddard

Price Range: \$351-400,000

License #9734

Phone: 316-737-9755



4

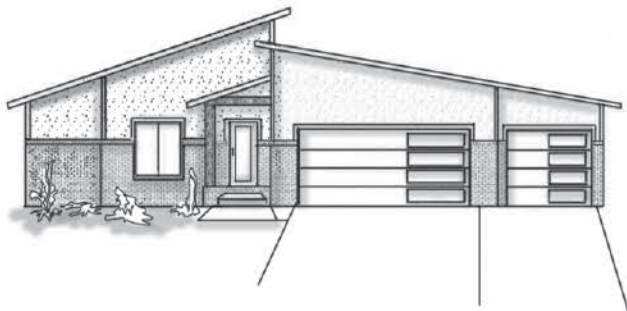
TW Custom Homes

Shown by: J Russell Communities

10417 W. Basil

Southern Ridge

This "Wesley" by TW Custom Homes is a showstopper with its modern elevation and enormous island. Luxury finishes and custom woodwork can be found throughout this 5 bedroom, 3 bath beauty. Prefer a traditional elevation? Stop by to see how you can customize this functional floor plan.



JRussellCommunities.com

Above Ground Sq. Ft.: 1450

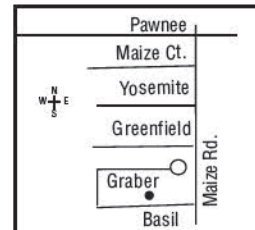
Total Sq. Ft.: 2625

School: Goddard

Price Range: \$351-400,000

License #9536

Phone: 316-737-9755



5

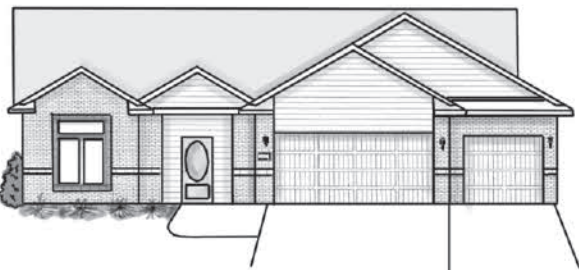
Don Klausmeyer Const., LLC

Shown by: Golden, Inc. Realtors

13516 W. Jewell

The Preserve

The Trinity by Klausmeyer offers over 1600 sq. ft. with a front entry hall that opens to living/dining and kitchen area at the back of the home. Double french doors open into a den right off the living area providing space for office or additional living space. The split bedroom layout of this home provides a guest suite as well as primary suite with his and her closets, double vanity in bath and no step shower.



newhomeswichitaks.com

Above Ground Sq. Ft.: 1627

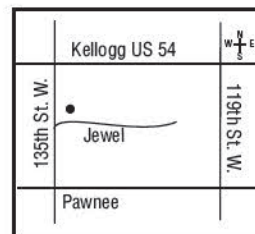
Total Sq. Ft.: 1627

School: Goddard

Price Range: \$301-350,000

License #362

Phone: 316-648-6229



6

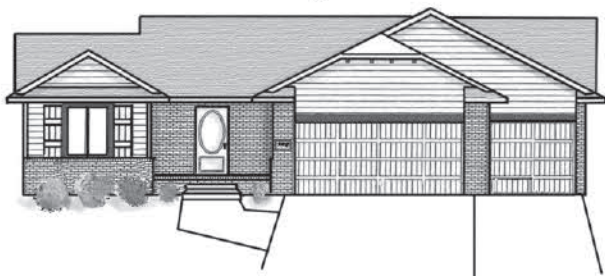
Don Klausmeyer Const., LLC

Shown by: West Edge Real Estate

2323 S. Hickory Creek

Turkey Creek

Wonderful plan with split bedrooms. Kitchen has large island, popular walk-in pantry. Master includes double vanity, walk-in shower. Covered patio with 3 car garage. Space for 2 bedrooms and bath in unfinished basement. Beautiful windows and details throughout. Open Daily!



Above Ground Sq. Ft.: 1357

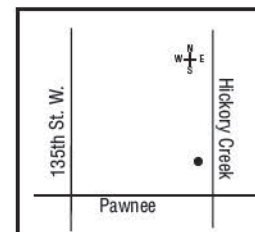
Total Sq. Ft.: 1357

School: Goddard

Price Range: \$251-300,000

License #362

Phone: 316-990-7379



7

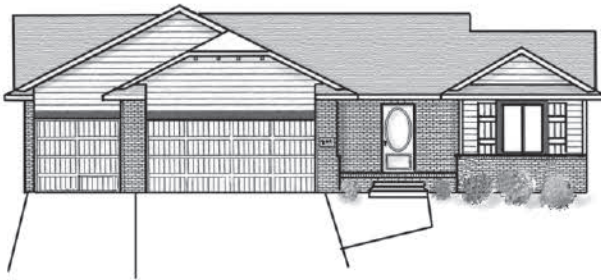
Don Klausmeyer Const., LLC

Shown by: West Edge Real Estate

2327 S. Hickory Creek

Turkey Creek

The Justin model features on open floor plan with large windows and island kitchen. Master bath has double vanity, oversized walk-in closet conveniently connected to the main floor laundry. Optional basement finish includes 2 more bedrooms. Open Daily.



Above Ground Sq. Ft.: 1261

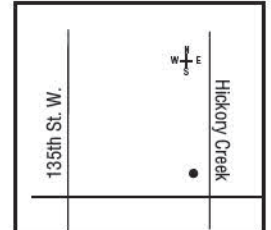
Total Sq. Ft.: 1261

School: Goddard

Price Range: \$251-300,000

License #362

Phone: 316-990-7379



8

Perfection Builders, LLC

Shown by: PB Realty

1429 S. Canyon

The Courtyards at Auburn Lakes

Enjoy the ultimate outdoor living privacy in our popular Promenade home with perfect entertaining layout. Found in the heart of the naturally beautiful setting of Auburn Lakes.



Thecourtyardsatauburnlakes.com

Above Ground Sq. Ft.: 2100

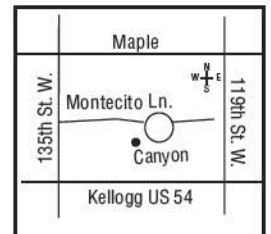
Total Sq. Ft.: 2100

School: Goddard

Price Range: \$401-450,000

License #6202

Phone: 316-308-8368



9

Steve Seiler Construction, Inc.

Shown by: Coldwell Banker Plaza Real Estate

1505 S. Dove Place

Dove Estates - Dove Landing

No Special Tax Assessments on this development! Gated 55+ Dove Landing Community. Luxury living begins the moment you enter through the true zero entry. Community neighbor's West Wichita in Goddard, KS, with a greenbelt and HOA. Quality-built by Steve Seiler Construction, LLC



debbiehaukap.com

Above Ground Sq. Ft.: 1885

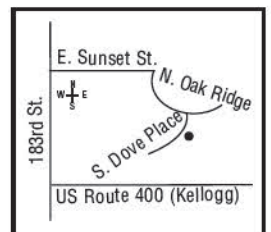
Total Sq. Ft.: 1885

School: Goddard

Price Range: \$451-500,000

License #3089

Phone: 316-644-9114



10

Comfort Homes, Inc.

701 N. Casado St.

Shown by: Berkshire Hathaway HomeServices PenFed Realty

Clover Leaf Farms

Very unique Lil' Davey split bedroom plan with a more private entry into a beautiful open living area. Quartz in kitchen, luxury vinyl plank and luxury trim in main living area. Drop zone. Main floor laundry. High efficiency furnace. Covered back patio, sod, sprinkler and well! Come See!

comforthomesinc.com

Above Ground Sq. Ft.: 1260

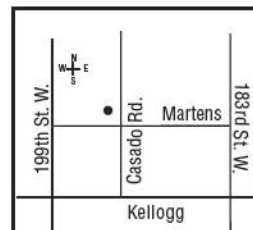
Total Sq. Ft.: 1305

School: Goddard

Price Range: \$251-300,000

License #372

Phone: 316-461-1405



11

Don Klausmeyer Const., LLC

705 N. Casado St.

Shown by: Berkshire Hathaway HomeServices PenFed Realty

Clover Leaf Farms

Must see! Our beautiful Morgan split bedroom floor plan with covered back patio, large pantry, spacious dining, oversized master bedroom, walk-in closet, main floor laundry, finished rec room, 3rd bath and wet bar in basement. 4th and 5th bedrooms roughed in. 8 foot garage doors. Full approach driveway.

comforthomesinc.com

Above Ground Sq. Ft.: 1348

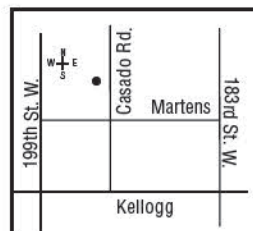
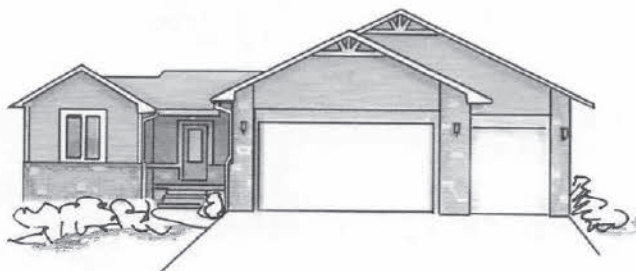
Total Sq. Ft.: 2018

School: Goddard

Price Range: \$301-350,000

License #362

Phone: 316-461-1405



12

Vision Custom Homes

1242 W. Ravendale

Shown by: RE/MAX Premier

Arbor Creek

Autumn floor plan offered by Vision Homes has arrived in Arbor Creek! Split bedroom design with stunning upgraded trim, cabinets, island kitchen, large master with connection to a laundry, spa-like master bath, plant shelves, shower plus free-standing tub and oversized deck!

YourHomeWichita.com

Above Ground Sq. Ft.: 1700

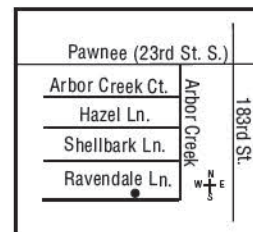
Total Sq. Ft.: 3500

School: Goddard

Price Range: \$451-500,000

License #6660

Phone: 316-640-1186



1246 W. Ravendale

Arbor Creek

13

Keystone Construction

Shown by: RE/MAX Premier

Just when you thought the Aspen plan could not get any better! Keystone has outdone themselves with this stunning design offering shed roof, interior wood beams, fireplace bench, black windows, upgraded appliances, floating shelves and custom range hood!



YourHomeWichita.com

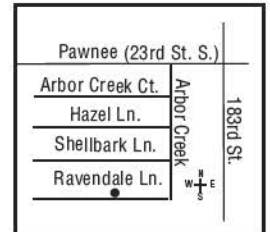
Above Ground Sq. Ft.: 1556
Total Sq. Ft.: 1556

School: Goddard

Price Range: \$351-400,000

License #3871

Phone: 316-640-1186



1250 W. Ravendale

Arbor Creek

14

Buckert Contracting, Inc.

Shown by: RE/MAX Premier

Welcome to the new model home presented by Buckert Contracting. The front elevation offers a covered porch, black windows, board-batten siding. The interior bestows open design split bedrooms, laundry connected to master, gorgeous drop zone and upgraded cabinets.



YourHomeWichita.com

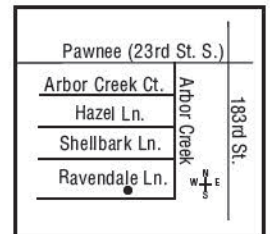
Above Ground Sq. Ft.: 1552
Total Sq. Ft.: 1552

School: Goddard

Price Range: \$351-400,000

License #5442

Phone: 316-640-1186



1254 W. Ravendale

Arbor Creek

15

Moeder Construction

Shown by: RE/MAX Premier

Just when you thought the Riverton design by Moeder could not get any better! Come tour this split bedroom plan with a raised patio, hip roof, gorgeous coffee bar, large dining, tile shower with inside seat and custom cubbies! Let's build you one!



YourHomeWichita.com

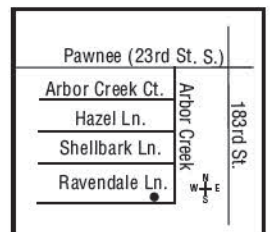
Above Ground Sq. Ft.: 1540
Total Sq. Ft.: 1540

School: Goddard

Price Range: \$351-400,000

License #523

Phone: 316-640-1186



16

Relph Construction, Inc.

1227 Main St., Goddard

Shown by: Keller Williams Hometown Partners

Rustic Creek

Zero entry, 3 bed, 2 bath, new construction patio home. Open concept with electric fireplace, large kitchen island with granite and LVP flooring, walk-in pantry, walk-in closets, and concrete storm room. This home sits on a large corner lot. Price includes sprinkler system, sod and irrigation well. Come check out one of Goddard's newest housing additions.



Barbmaley.com

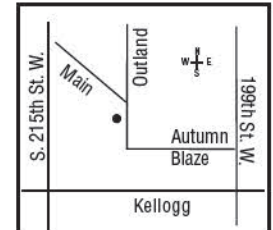
Above Ground Sq. Ft.: 1806
Total Sq. Ft.: 1806

School: Goddard

Price Range: \$301-350,000

License #3344

Phone: 316-308-2003



17

Nies Homes, Inc.

165 S. Ciderbluff Ct.

Shown by: J Russell Communities

Talia

Farmhouse style with grand entry features 5 bedrooms, 3 1/2 baths and over 3400 sq. ft. Open plan includes spacious living/dining area with large windows, a chef's kitchen with walk-in pantry, and large island. Master has his and her vanities, walk-in closet and tile shower. The spacious family room includes a wet bar for hosting events! A must see!



JRussellCommunities.com

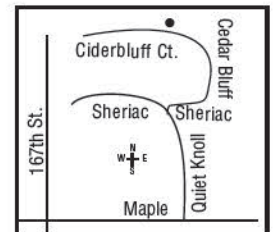
Above Ground Sq. Ft.: 1967
Total Sq. Ft.: 3548

School: Goddard

Price Range: \$651-700,000

License #469

Phone: 316-841-1250



18

Robl Building Company

169 S. Ciderbluff Ct.

Shown by: J Russell Communities

Talia

Traditional style ranch includes 5 bedrooms, 4 baths and over 3600 sq. ft. Open concept floor plan with stone fireplace, large picture windows in living/dining area, covered patio, a spacious kitchen with large island, and walk-in pantry. Basement includes large family room with wet bar, game table area, and extra bar seating making this an entertainer's dream!



JRussellCommunities.com

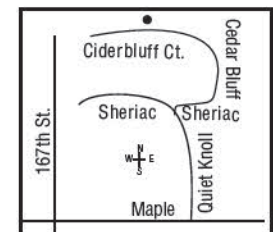
Above Ground Sq. Ft.: 2059
Total Sq. Ft.: 3672

School: Goddard

Price Range: \$601-650,000

License #10349

Phone: 316-841-1250



19

Craig Sharp Homes, Inc.

Shown by: J Russell Communities

239 S. Ciderbluff Cr.

Talia

This modern home will catch your eye instantly! Grand foyer which leads to open great room. Large kitchen island and walk-in pantry. Primary suite has dual vanities and full tile walk-in shower. Covered lanai is the perfect spot to unwind. Entertain away in spacious family room with walk-up bar.



JRussellCommunities.com

Above Ground Sq. Ft.: 2033

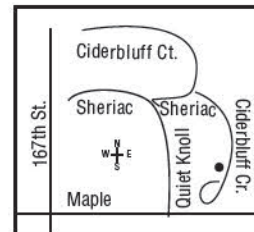
Total Sq. Ft.: 3694

School: Goddard

Price Range: \$651-700,000

License #10653

Phone: 316-841-1250



20

Relph Construction, Inc.

Shown by: J Russell Communities

268 W. Wellcrest Ct.

Talia

The showstopping 12' steel doors on both the main floor and basement allow for natural light! They open directly to lanai and large entertaining deck. Dining room has 6 windows each 6' tall. Take advantage of the location near Talia's clubhouse and amazing amenities this community has to offer.



JRussellCommunities.com

Above Ground Sq. Ft.: 1781

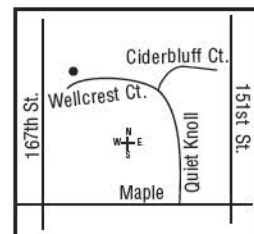
Total Sq. Ft.: 3381

School: Goddard

Price Range: \$601-650,000

License #3344

Phone: 316-841-1250



21

M&M Custom Construction, LLC

Shown by: J Russell Communities

248 S. Ciderbluff Cr.

Talia

The Marlee by M&M Custom Construction is an open concept floor plan with a large kitchen area great for entertaining. The master suite includes a tile shower, soaker tub, and walk-in closet. This home includes 5 bedrooms, 3 bathrooms and over 3200 sq. ft. The large family room features a wet bar, perfect for entertaining.



JRussellCommunities.com

Above Ground Sq. Ft.: 1735

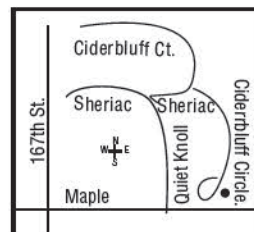
Total Sq. Ft.: 3235

School: Goddard

Price Range: \$451-500,000

License #7873

Phone: 316-841-1250



22

TW Custom Homes

Shown by: J Russell Communities

252 S. Ciderbluff Cr.

Talia

TW Custom Homes brand-new Sedona floor plan is the definition of modern with 5 bedrooms, 3 baths and over 3400 sq. ft. This open concept includes features like a wine bar enclosed in glass, a wet room in the master suite, and a large pub area for entertaining in the basement.

**JRussellCommunities.com**

Above Ground Sq. Ft.: 1899

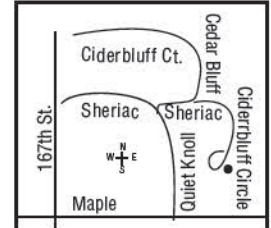
Total Sq. Ft.: 3474

School: Goddard

Price Range: \$551-600,000

License #9536

Phone: 316-841-1250



23

H & H Homebuilders, Inc.

Shown by: New Door Real Estate

706 N. Thornton St.

Castlegate

Welcome to the Panama by H&H Homebuilders! Notice the efficient design and effective use of natural light throughout the entire home to give the spacious feeling of home. The master bath with fully-tiled, zero entry, walk-in shower gives you a spa-like experience. The large pantry also serves as your safe room. The office/den is conveniently located as you enter the spacious foyer. Castlegate has a clubhouse, saltwater pool and stocked fishing pond!

**castlegateks.com**

Above Ground Sq. Ft.: 1637

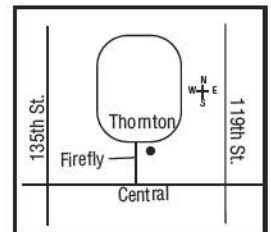
Total Sq. Ft.: 1637

School: Goddard

Price Range: \$401-450,000

License #6281

Phone: 316-619-5709



24

Jim Gearhart Homes, LLC

Shown by: New Door Real Estate

710 N. Thornton St.

Castlegate

One look at the Briarly II plan built by Jim Gearhart Homes and you will want to move right in. This 2 bedroom, 2 bathroom home wow's you at every turn. From the show-stopping kitchen to the huge walk-in pantry to the spa-like master bathroom to your private screened-in patio to the design and beauty in every detail. This home has all you could ever want and more! Come visit Castlegate today!

**castlegateks.com**

Above Ground Sq. Ft.: 1842

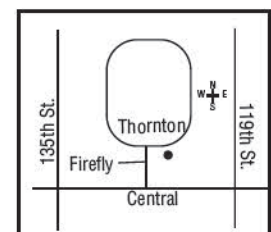
Total Sq. Ft.: 1842

School: Goddard

Price Range: \$451-500,000

License #835

Phone: 316-619-5709



25

Mullin, Inc.

Shown by: J Russell Communities

1758 N. Forestview Ct.

Eberly Trails

The Kinsey with stunning entry leading to large living room, dining and kitchen with vaulted ceilings, custom cabinetry is a must see! Large windows looking out to screened patio with gas fireplace. Master suite with accent wall, custom tile shower and walk thru closet to laundry.



JRussellCommunities.com

Above Ground Sq. Ft.: 2100

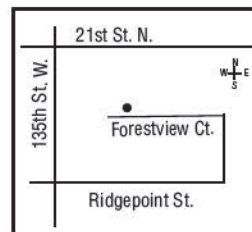
Total Sq. Ft.: 2100

School: Maize

Price Range: \$401-450,000

License #972

Phone: 316-680-5247



26

Lies-Bugner Homes, LLC

Shown by: J Russell Communities

1762 N. Forestview Ct.

Eberly Trails

The Cobblestone with it's beautiful high-end finishes and large living spaces is perfect for everyday living and entertaining. Living room with tile fireplace and large custom coffee/wine bar. Enjoy outdoor living on a large screened covered porch.



JRussellCommunities.com

Above Ground Sq. Ft.: 1965

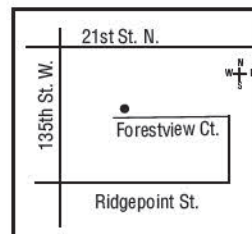
Total Sq. Ft.: 1965

School: Maize

Price Range: \$351-400,000

License #3624

Phone: 316-680-5247



27

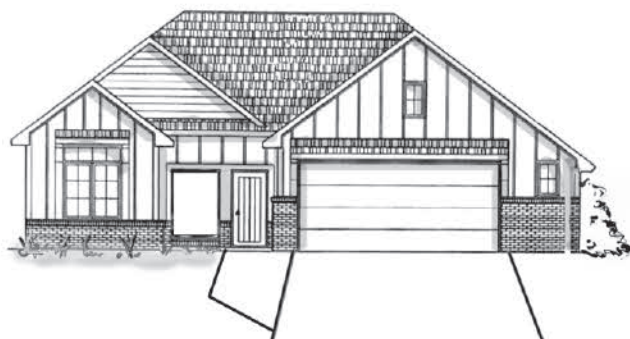
Lies-Bugner Homes, LLC

Shown by: J Russell Communities

1766 N. Forestview Ct.

Eberly Trails

This Fresco built with an all-season sunroom gives a "wow" factor with more living space for relaxing and entertaining. Walk-in closets with lots of storage, luxury finishes, custom cabinetry throughout this zero entry home on a beautiful treed lot.



JRussellCommunities.com

Above Ground Sq. Ft.: 2093

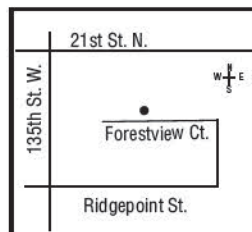
Total Sq. Ft.: 2093

School: Maize

Price Range: \$351-400,000

License #3624

Phone: 316-680-5247



28

Socora Homes, Inc.

3110 Judith

Shown by: ReeceNichols South Central Kansas

Fontana

Enjoy water views from this Lockwood plan boasting modern charm with luxury finishes. Open concept with a vaulted beamed ceiling, gas fireplace with floating shelves, walk-in hidden pantry, fully finished basement with wet bar, and 9x16 covered deck offer privacy and quiet.

fontanawichita.com

Above Ground Sq. Ft.: 1738

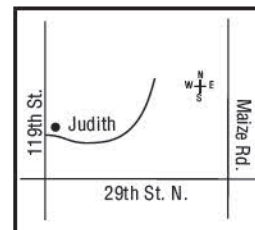
Total Sq. Ft.: 2822

School: Maize

Price Range: \$501-550,000

License #6380

Phone: 316-737-6342



29

Robl Building Company

3114 Judith

Shown by: ReeceNichols South Central Kansas

Fontana

Robl's Cardington Plan offers spacious living with over 3,000 sq. ft. Some of its amenities include oversized windows, 12' ceiling in living room with 74" linear fireplace, water views from most rooms, finished basement with wet bar and large covered concrete deck for entertaining.

fontanawichita.com

Above Ground Sq. Ft.: 1839

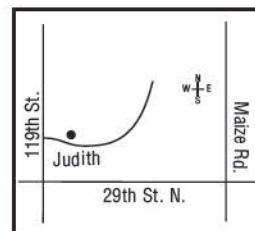
Total Sq. Ft.: 3095

School: Maize

Price Range: \$601-650,000

License #10349

Phone: 316-737-6342



30

Socora Homes, Inc.

3132 Pine Grove Cr.

Shown by: ReeceNichols South Central Kansas

Fontana

This Pinnacle plan has the character and charm you would find in a classic home but with all the luxury finishes you would expect today. From the sizeable front porch to the primary suite tucked away from the rest of the house, this plan will make you appreciate privacy and relaxation.

fontanawichita.com

Above Ground Sq. Ft.: 1631

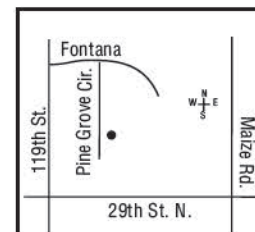
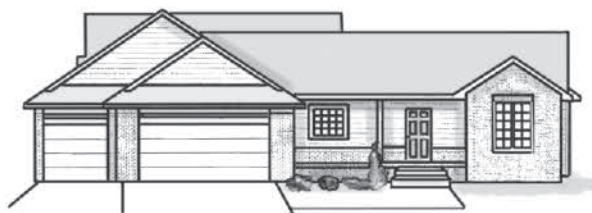
Total Sq. Ft.: 2801

School: Maize

Price Range: \$451-500,000

License #6380

Phone: 316-737-6342



31

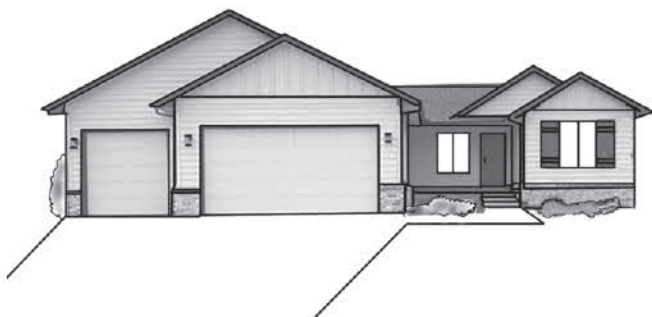
Don Klausmeyer Const., LLC

Shown by: Golden, Inc. Realtors

10494 Wilkinson, Maize

Eagle's Nest 2nd

The ever popular Justin plan by Klausmeyer features a split bedroom design with vaulted open main living area, large center isle kitchen with big walk-in closet, main floor laundry connected to the large master closet and roomy ensuite master bath with his and her vanities and 5' shower.



newhomeswichitaks.com

Above Ground Sq. Ft.: 1261

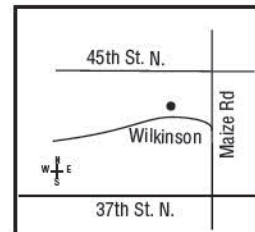
Total Sq. Ft.: 1261

School: Maize

Price Range: \$251-300,000

License #362

Phone: 316-648-6229



32

Comfort Homes, Inc.

Shown by: Keller Williams Hometown Partners

10498 Wilkinson, Maize

Eagle's Nest 2nd

The Phantom XL open floor plan with lots of standard features. 3 bedrooms, 2 baths, large picture windows, luxury flooring on main level, full-tile backsplash in kitchen, appliances. Bathrooms feature wood-wrapped mirrors and large showers with glass doors and so much more! Eagles Nest 2nd - South of 45th and Maize Rd.



nancyjosellswichita.com

Above Ground Sq. Ft.: 1336

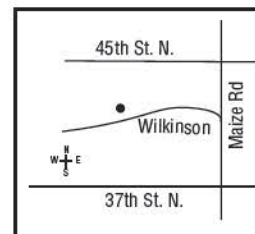
Total Sq. Ft.: 1386

School: Maize

Price Range: \$301-350,000

License #372

Phone: 316-393-2551



33

Beverlin Custom Homes

Shown by: J Russell Communities

4501 Bluestem

Henwick

Outstanding "Cottonwood" 1 1/2 story with primary and office with glass barn door entry on first floor and bedrooms 2-3 on 2nd floor along with large bonus room! Butler pantry in kitchen. Primary closet now open to laundry. Soaring 2 story foyer entry with grand staircase. Extended garage.



JRussellCommunities.com

Above Ground Sq. Ft.: 2883

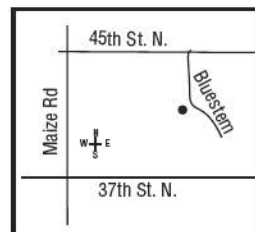
Total Sq. Ft.: 2883

School: Maize

Price Range: \$551-600,000

License #9434

Phone: 316-204-9467



34

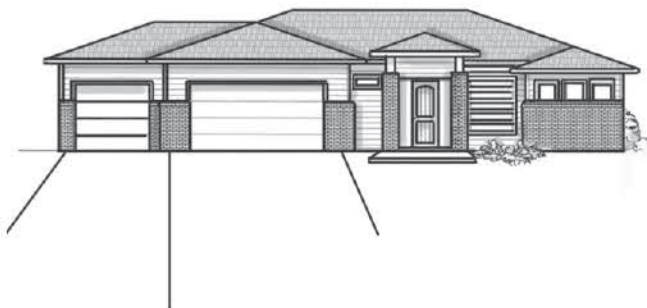
Lies-Bugner Homes, LLC

Shown by: J Russell Communities

4505 Bluestem

Henwick

The "Creekside" is a favorite with minimal step entry. Relaxing screened in raised patio with outdoor fireplace. Modern interior with tile wall fireplace in living. Large island with storage beneath. Finished family room with wetbar and options for private baths next to basement bedrooms.



JRussellCommunities.com

Above Ground Sq. Ft.: 1766

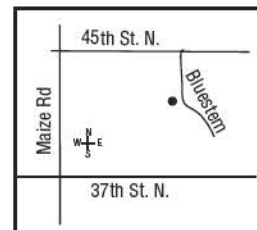
Total Sq. Ft.: 2934

School: Maize

Price Range: \$501-550,000

License #3624

Phone: 316-204-9467



35

Robl Building Company

Shown by: J Russell Communities

4509 Bluestem

Henwick

Entertainers dream "Lakewood" opens to living with family room with wet bar tucked to the side. Kitchen with huge 8' island. Secluded primary suite connects to laundry. Covered deck off dining leading to covered patio just off the flex room! Basement finished with family room, 2 bedrooms and bath.



JRussellCommunities.com

Above Ground Sq. Ft.: 1910

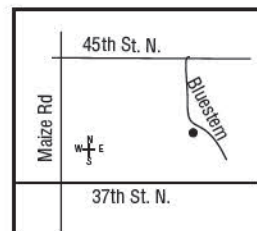
Total Sq. Ft.: 2912

School: Maize

Price Range: \$551-600,000

License #10349

Phone: 316-204-9467



36

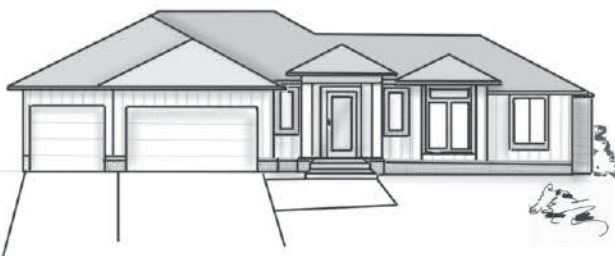
M&M Custom Construction, LLC

Shown by: J Russell Communities

4513 Bluestem

Henwick

Popular "Kenzie" plan with basement stairs to side of home! Noteworthy tower entry and large windows. Primary bath has wet room with slipper tub inside walk-in glass shower. Large kitchen with extra side bar topped with floating shelves. Spacious room sizes and finished basement with bar.



JRussellCommunities.com

Above Ground Sq. Ft.: 1787

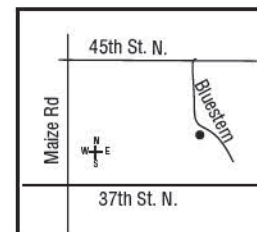
Total Sq. Ft.: 3270

School: Maize

Price Range: \$501-550,000

License #7873

Phone: 316-204-9467



37

Paul Gray Homes, LLC

Shown by: J Russell Communities

4517 Bluestem

Henwick

The "Seville" plan with contemporary slope roofline is wonderfully modern. Private entry opens to living with large windows leading to private outdoor patio. Alligator tile surround fireplace. Kitchen has window above sink and reverse bar on island. Finished family room and bath in basement.



JRussellCommunities.com

Above Ground Sq. Ft.: 1733

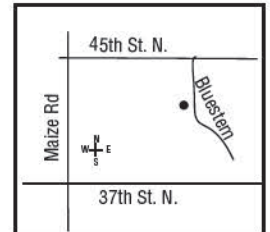
Total Sq. Ft.: 2652

School: Maize

Price Range: \$551-600,000

License #6995

Phone: 316-204-9467



38

JL Russell Construction

Shown by: J Russell Communities

4521 Bluestem

Henwick

Showstopper "Kevin" with stairs to lower level on side of home with full glass walls! Clean kitchen island looking over living with vault, and the coveted window over kitchen sink looking to front of home. Pantry runs behind length of kitchen. Primary bath a spa! 6 bedroom home!



JRussellCommunities.com

Above Ground Sq. Ft.: 1750

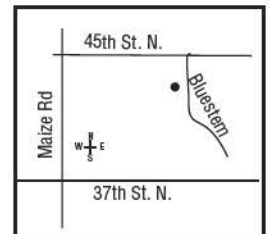
Total Sq. Ft.: 3364

School: Maize

Price Range: \$601-650,000

License #9043

Phone: 316-204-9467



39

J Wiens Design Build

Shown by: High Point Realty

3921 N. Brush Creek

Cypress Point

Welcome to this stunning custom home by J Wiens Design Build. Step into the spacious open plan, perfect for entertaining guests. The stylish kitchen boasts a large island and walk-in pantry. With 3 beds and 2 baths, this home offers comfort and convenience. Relax in the main floor family room or take in the breathtaking lake views from the expansive covered patio. Don't miss out on this dream home!



cypresspointwichita.com

Above Ground Sq. Ft.: 2339

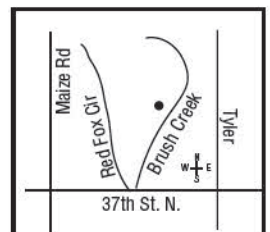
Total Sq. Ft.: 2339

School: Maize

Price Range: \$601-650,000

License #10359

Phone: 316-990-5740



40**Vision Custom Homes**

Shown by: High Point Realty

3849 N. Brush Creek

Cypress Point

Presenting Vision Custom Homes stunning design, The Aspen. Located in Cypress Point, this zero entry home boasts an open floor plan, split bedrooms, exquisite trim carpentry, a spacious secondary living space, and a charming covered porch overlooking the pond. Your dream home awaits!

cypresspointwichita.com

Above Ground Sq. Ft.: 2061

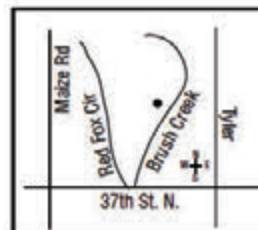
Total Sq. Ft.: 2061

School: Maize

Price Range: \$551-600,000

License #6660

Phone: 316-990-5740

**41****Deer Creek Custom Homes**

Shown by: Deer Creek Custom Homes

8868 Blackwood

Skycrest

Can you say Sports Court? Are you a coach? Actively involved in your kids sports? Have rambunctious kids you would like to send outside? This home is for you! A spacious zero entry home with 2238 sq. ft. Sports Court attached to the home.

deercreekhomedesign.com

Above Ground Sq. Ft.: 2238

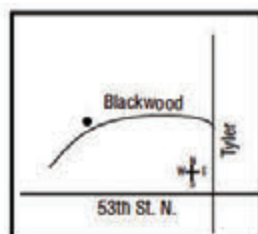
Total Sq. Ft.: 2238

School: Maize

Price Range: \$551-600,000

License #10664

Phone: 316-258-0667

**42****Artistic Builders**

Shown by: RE/MAX Premier

8306 Waterway Ct.

The Coves

This zero entry home offers so much space! The kitchen is a chef's dream with the extra-large island and gas range, and the master bath is a modern oasis with soaker tub. There is a bonus room above the garage for a potential office, study or storage.

YourHomeWichita.com

Above Ground Sq. Ft.: 2165

Total Sq. Ft.: 2165

School: Maize

Price Range: \$451-500,000

License #8480

Phone: 316-833-0796



43

Jim Gearhart Homes, LLC

Shown by: RE/MAX Premier

8312 Waterway Ct.

The Coves

When you walk in you will instantly feel at home! This spacious zero-entry open floor plan is sure to check all your wants and needs. The large living room opens to the gourmet kitchen for entertaining ease. The kitchen is complete with a gas stove, quartz countertops, a large island, and so much more.

**YourHomeWichita.com**

Above Ground Sq. Ft.: 1933

Total Sq. Ft.: 1933

School: Maize

Price Range: \$501-550,000

License #835

Phone: 316-833-0796



44

Bob Cook Homes, LLC

Shown by: RE/MAX Premier

8318 Waterway Ct.

The Coves

This zero entry patio home captivates you as soon as you walk through the front door. As you enter the spacious living room, it opens to a large kitchen and dining room. This luxurious open plan is great for having the family over for any occasion. You will love making memories in this home!

**YourHomeWichita.com**

Above Ground Sq. Ft.: 2227

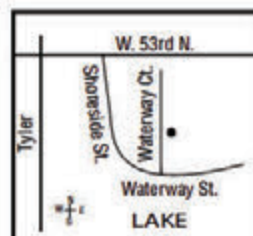
Total Sq. Ft.: 2227

School: Maize

Price Range: \$601-650,000

License #782

Phone: 316-833-0796



45

Jim Gearhart Homes, LLC

Shown by: RE/MAX Premier

8362 Waterway Ct.

The Coves

This zero-entry floor plan is sure to check all your wants and needs. The living room is large and cozy with a stunning fireplace, open to the gourmet kitchen. The three season patio is the perfect space to sit and watch the sunset with your family.

**YourHomeWichita.com**

Above Ground Sq. Ft.: 1842

Total Sq. Ft.: 1842

School: Maize

Price Range: \$501-550,000

License #835

Phone: 316-833-0796



46**Artistic Builders**

Shown by: RE/MAX Premier

8368 Waterway Ct.

The Coves

This impeccable design by Artistic Builders will have you wanting to move in tomorrow! The spacious great room combined with the gourmet kitchen is unlike any other patio home. Step out onto the oversized patio where you can envision relaxing with your loved ones!

**YourHomeWichita.com**

Above Ground Sq. Ft.: 2132

Total Sq. Ft.: 2132

School: Maize

Price Range: \$501-550,000

License #8480

Phone: 316-833-0796

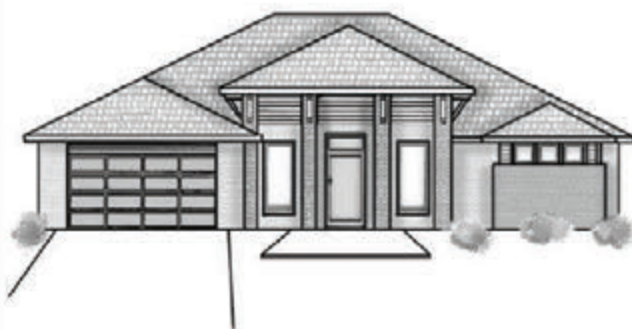
**47****Bob Cook Homes, LLC**

Shown by: RE/MAX Premier

8369 Waterway Ct.

The Coves

This zero-entry patio home captivates you as soon as you walk through the front door. The fireplace feature wall in the living room is as stunning as the views of the water. This home has everything you need for your own private oasis.

**YourHomeWichita.com**

Above Ground Sq. Ft.: 2357

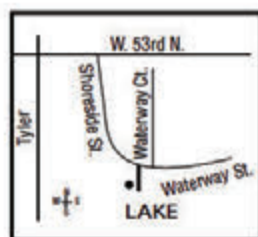
Total Sq. Ft.: 2357

School: Maize

Price Range: \$751-800,000

License #782

Phone: 316-833-0796

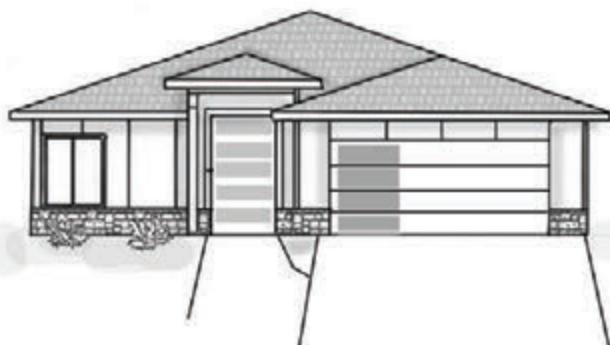
**48****Bob Cook Homes, LLC**

Shown by: RE/MAX Premier

8374 Waterway Ct.

The Coves

This zero-entry patio home is ready for you to make it home! Be ready to entertain with the gourmet kitchen with extra-large island, gas cooking surface, and pantry with so much storage. The glass wall patio doors open so that you can enjoy the sunset from your kitchen, living room, or out on the patio.

**YourHomeWichita.com**

Above Ground Sq. Ft.: 2165

Total Sq. Ft.: 2165

School: Maize

Price Range: \$601-650,000

License #782

Phone: 316-833-0796



49

Buckert Contracting, Inc.

Shown by: RE/MAX Premier

4901 Emerald Ct.

The Coves

Welcome Home to your gorgeous new ranch-style oasis. Enjoy the open concept living space and soak up the natural light from the large scenic windows. Relax outside on the covered patio or cozy up with your family in your new contemporary abode. This wooded area is beautiful.



YourHomeWichita.com

Above Ground Sq. Ft.: 1640

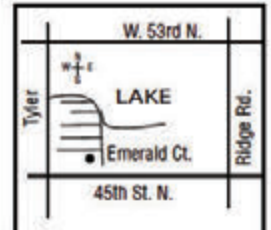
Total Sq. Ft.: 1640

School: Maize

Price Range: \$401-450,000

License #5442

Phone: 316-617-6700



50

Keystone Construction

Shown by: RE/MAX Premier

4905 Emerald Ct.

The Coves

Stunning and luxurious home packed with extras like tile floors in the laundry and baths, bookshelves flanking the fireplace, quartz countertops, barn door to the master bath, and a big closet connecting to the laundry. An open floor plan ideal for large gatherings with the family room right off the kitchen.



YourHomeWichita.com

Above Ground Sq. Ft.: 1526

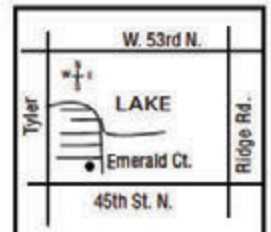
Total Sq. Ft.: 1526

School: Maize

Price Range: \$351-400,000

License #3871

Phone: 316-617-6700



51

Moeder Construction

Shown by: RE/MAX Premier

4909 Emerald Ct.

The Coves

You can fall in love with this interesting exterior elevation and it's gorgeous color, stone, wood accents and black windows. This split bedroom plan has a spacious mater suite with double vanity, tile shower, and walk-in closet connected to the laundry room. Open kitchen.



YourHomeWichita.com

Above Ground Sq. Ft.: 1540

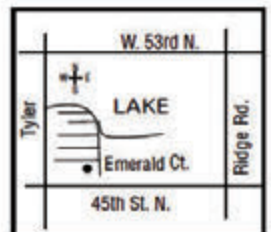
Total Sq. Ft.: 1540

School: Maize

Price Range: \$351-400,000

License #523

Phone: 316-617-6700



52**Artistic Builders**

Shown by: RE/MAX Premier

5147 Shoreside Ct.

The Coves

Privacy, curb appeal, and functionality in this 1 1/2 story home! Featuring an office right off the foyer. This layout is perfect for work from home or a secluded study area. Open kitchen and great room lead to a covered deck. Community pools, pickle ball. Fitness Center and more!

**YourHomeWichita.com**

Above Ground Sq. Ft.: 2406

Total Sq. Ft.: 2406

School: Maize

Price Range: \$551-600,000

License #8480

Phone: 316-789-5035

**53****McClellan Enterprises, Inc.**

Shown by: RE/MAX Premier

5155 Shoreside Ct.

The Coves

Zero-grade entry to this open concept ranch plan that backs to the native prairie grass berms for unmatched privacy! Two separate living spaces in close proximity to the open island kitchen lend to the appeal and functionality of this home. For morning coffee, the covered patio with outdoor fireplace is the most cozy spot!

**YourHomeWichita.com**

Above Ground Sq. Ft.: 2682

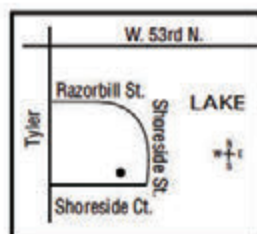
Total Sq. Ft.: 2682

School: Maize

Price Range: \$601-650,000

License #2967

Phone: 316-789-5035

**54****Artistic Builders**

Shown by: RE/MAX Premier

5159 Shoreside Ct.

The Coves

Charming character is in the details of this light and bright 1 1/2 story home situated on a bermed cul-de-sac homesite. Luxury master suite with oversized full tile shower and the closet you have been waiting for! Upstairs loft is the perfect play area. Window to the under-stairs finish is the perfect reading nook! Many added touches make this home!

**YourHomeWichita.com**

Above Ground Sq. Ft.: 3119

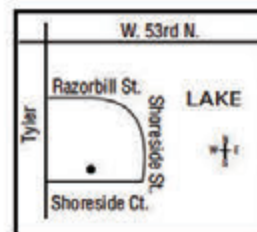
Total Sq. Ft.: 3119

School: Maize

Price Range: \$551-600,000

License #8480

Phone: 316-789-5035



55

Robl Building Company

Shown by: J Russell Communities

5946 W. 45th Ct. N.

Castaway

This timeless lakeside cottage will win your heart with attention to the details, and every day livability, while providing serene spaces for entertaining...and a place for your boat! Gather, work, and play in beautiful Castaway.

JRussellCommunities.com

Above Ground Sq. Ft.: 2178

Total Sq. Ft.: 3836

School: Maize

Price Range: \$801-850,000

License #10349

Phone: 316-990-5460



56

Nies Homes, Inc.

Shown by: J Russell Communities

5950 W. 45th Ct. N.

Castaway

The incredible Jackson plan is "Different by Design!" With a nearly two story staircase surrounded by glass, and an abundance of natural light, the views are of far away places, but you will know you are home.

JRussellCommunities.com

Above Ground Sq. Ft.: 2166

Total Sq. Ft.: 4127

School: Maize

Price Range: \$951-1M

License #469

Phone: 316-990-5460



57

Craig Sharp Homes, Inc.

Shown by: J Russell Communities

5954 W. 45th Ct. N.

Castaway

How about a little trip to Cozumel? The incredible Cozumel Plan by Craig Sharp Homes will whisk you away to another place..(A place with a beach!), and have you captivated by subtle Spanish hints and luxurious amenities throughout!

JRussellCommunities.com

Above Ground Sq. Ft.: 2185

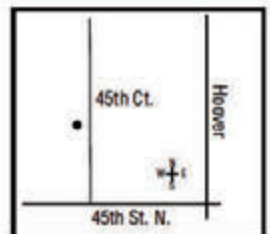
Total Sq. Ft.: 3806

School: Maize

Price Range: \$851-900,000

License #569

Phone: 316-990-5460



58

Paul Gray Homes, LLC

Shown by: J Russell Communities

5958 W. 45th Ct. N.

Castaway

Paul Gray Homes has once again raised the bar with a graduated entry that is as dramatic as the rest of this transitional masterpiece! From mixed metals and woods to exquisite details at every turn, this home is livable luxury defined.

JRussellCommunities.com

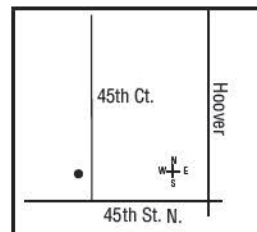
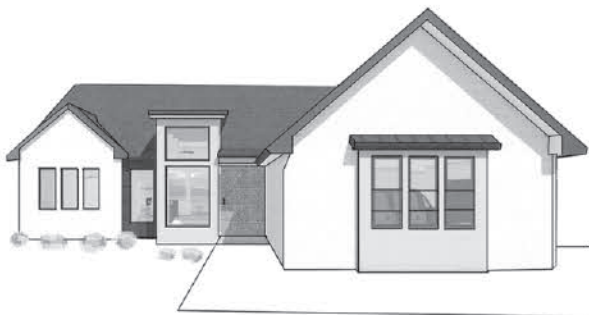
Above Ground Sq. Ft.: 2110
Total Sq. Ft.: 3525

School: Maize

Price Range: \$751-800,000

License #6995

Phone: 316-990-5460



59

Craig Sharp Homes, Inc.

Shown by: Berkshire Hathaway HomeServices PenFed Realty

2210 N. Emmalyn Ct.

Emerald Bay Estates

The Brentwood by Craig Sharp Homes is a modern art deco design with a mid-century flare. Features include lanai with stacking doors, butler's pantry, covered cabana, grilling island, fireplace, office deck, and sundeck surrounding the in-ground gunite pool with Baja lounge deck!

craigsharphomes.com

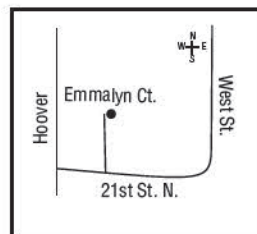
Above Ground Sq. Ft.: 3281
Total Sq. Ft.: 5532

School: Maize

Price Range: Over \$1.5M

License #10653

Phone: 316-806-6686



60

Nies Homes, Inc.

Shown by: Berkshire Hathaway HomeServices PenFed Realty

2214 N. Emmalyn Cr.

Emerald Bay Estates

Located in Emerald Bay Estates on a 100-acre ski lake. Vacation at home with beautiful views. Open and spacious with 2 bedrooms on the main level plus a loft bedroom and bath. Full, finished basement with large family room with wet bar that serves to patio and bath to outside, 2 bedrooms, 2nd bath and storage.

EmeraldBayEstates.com

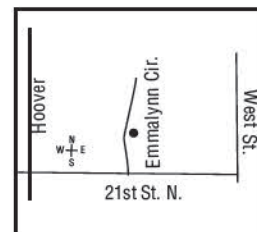
Above Ground Sq. Ft.: 2822
Total Sq. Ft.: 4511

School: Maize

Price Range: Over \$1.1 M

License #469

Phone: 316-806-6686



61

Craig Sharp Homes, Inc.

2420 N. Doris Cr.

Shown by: Berkshire Hathaway HomeServices PenFed Realty

Emerald Bay Estates

The "Cozumel" is a stunning new plan that has it all! Ample space both inside and out, this home offers 6 bedrooms, 5 bathrooms, plus 2 half baths. Relax on the raised concrete patio with fireplace and enjoy the fabulous view of the water! Vacation at home all year long!



EmeraldBayEstates.com

Above Ground Sq. Ft.: 3335

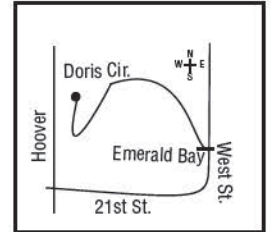
Total Sq. Ft.: 5029

School: Maize

Price Range: \$1.0M-1.5M

License #567

Phone: 316-806-6686



62

Bryan Lagaly Homes, LLC

2421 N. Doris Cr.

Shown by: Berkshire Hathaway HomeServices PenFed Realty

Emerald Bay Estates

This home will exceed your expectations! Contemporary architecture with a resort feel. Sprawling floor plan that extends to the outdoor courtyard with pool and spa. Designed for relaxing views from all rooms. 5th bedroom can double as pool house/guest house. WOW!



EmeraldBayEstates.com

Above Ground Sq. Ft.: 2841

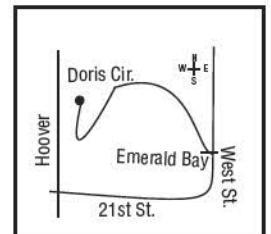
Total Sq. Ft.: 5330

School: Maize

Price Range: Over \$1.3M

License #9194

Phone: 316-806-6686



63

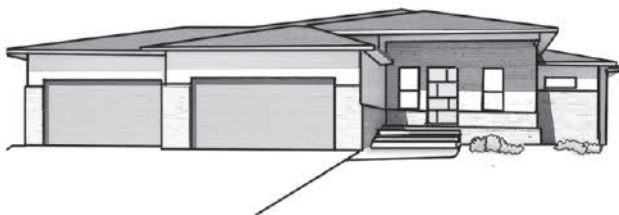
RJ Castle Custom Homes

2579 N. Doris Cr.

Shown by: Berkshire Hathaway HomeServices PenFed Realty

Emerald Bay Estates

Spacious main floor living area with 12' ceiling throughout. Trending modern look throughout with custom ceiling beams. Main floor with office off entry, 2nd bedroom with private bath and 1/2 bath. Private 2nd deck located off the master suite. Finished basement with huge family room with horseshoe bar. Enjoy all the amenities Emerald Bay has to offer!



EmeraldBayEstates.com

Above Ground Sq. Ft.: 2374

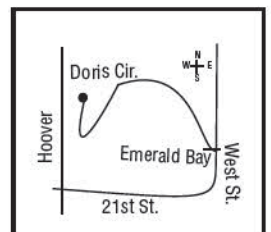
Total Sq. Ft.: 4294

School: Maize

Price Range: \$751-800,000

License #9734

Phone: 316-806-6686



64

Paul Gray Homes, LLC

4630 W. Emerald Bay Ct.

Shown by: Berkshire Hathaway HomeServices PenFed Realty

Emerald Bay Estates

Beautiful zero entry home with 3 bedrooms, 2 baths and 3 car garage. Great room features a dry bar, electric fireplace with tile surround and floating shelf bookcase. Relax and unwind on the large covered patio which overlooks a tree-lined private backyard. Concrete storm room and more! Enjoy all the amenities Emerald Bay has to offer!



EmeraldBayEstates.com

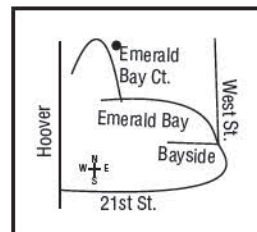
Above Ground Sq. Ft.: 1802
Total Sq. Ft.: 1802

School: Maize

Price Range: \$451-500,000

License #6995

Phone: 316-806-6686



65

RJ Castle Custom Homes

4670 W. Emerald Bay Ct.

Shown by: Berkshire Hathaway HomeServices PenFed Realty

Emerald Bay Estates

Stunning zero entry with 3 bedrooms, 2 1/2 baths plus an office. Spacious kitchen/great room with fireplace and accordion doors that expand your living area to the outdoors. Fireplace and stone dividers create a private relaxing or entertaining atmosphere. Master suite with shower and soaker tub. Lots of upgrades!



EmeraldBayEstates.com

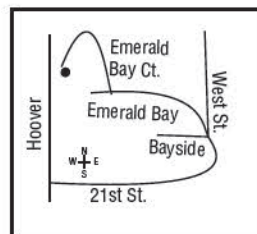
Above Ground Sq. Ft.: 1971
Total Sq. Ft.: 1971

School: Maize

Price Range: \$451-500,000

License #9734

Phone: 316-806-6686



66

H&H Homebuilders, Inc.

2791 N. Curtis Ct.

Shown by: J Russell Communities

Sandcrest

Zero entry ranch with 3 bedrooms, 2 full baths, great room with beams and fireplace. Center island with granite countertop, walk-in pantry, abundant counters and cabinets. LVL flooring in hearth, kitchen, dining, hallways. Additional features 3 car garage, screened in patio, well, sprinkler, lawn and landscaping.



JRussellCommunities.com

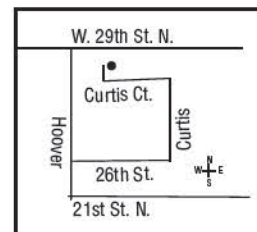
Above Ground Sq. Ft.: 1869
Total Sq. Ft.: 1869

School: Maize

Price Range: \$451-500,000

License #6281

Phone: 316-648-1199



67

Trademark, Inc.

Shown by: Keller Williams Hometown Partners

2021 W. Polo

Riverside Patio Homes ADD

Check out this patio home in Riverside next to Sims Golf Course and the Arkansas River. Golf Course View Down #1 Fairway. Home features 2 bedrooms and 2 full baths. Vaulted ceilings and fireplace in living room. Upgraded window package, vaulted outdoor patio space and built-in storage closet. The patio features built-in grill, masonry with screening. Upgraded finishes throughout home.



TheCorbyGroup.com

Above Ground Sq. Ft.: 1740

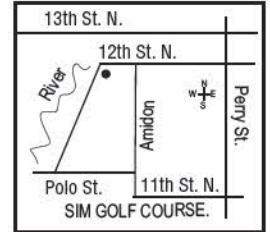
Total Sq. Ft.: 1740

School: Wichita

Price Range: \$351-400,000

License #5211

Phone: 316-305-0577



68

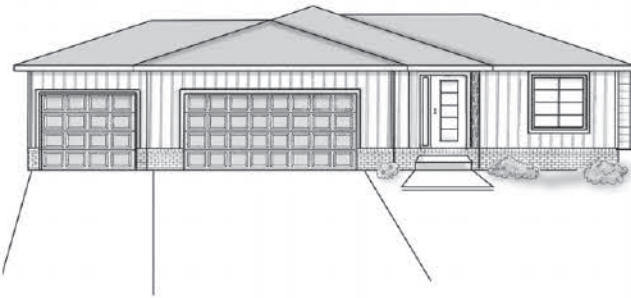
TW Custom Homes

Shown by: J Russell Communities

5436 N. Saint Paul St.

Watermark

This captivating new plan combined with its striking finishes make this model home a must see! The 2 story staircase windows and the his and hers closets in the owner's suite set this home apart.



JRussellCommunities.com

Above Ground Sq. Ft.: 1398

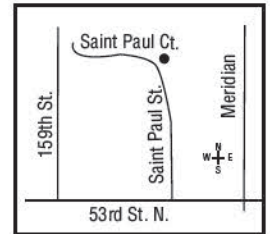
Total Sq. Ft.: 2571

School: Valley Center

Price Range: \$351-400,000

License #9536

Phone: 316-990-6585



69

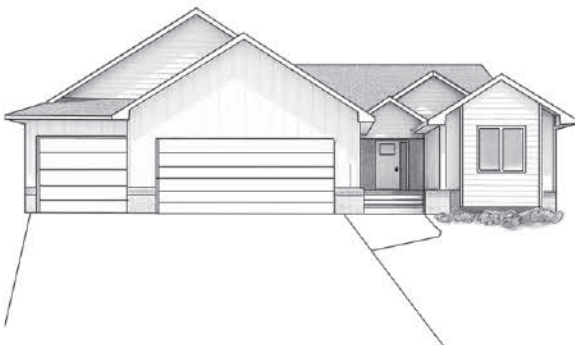
C&A Homes, LLC

Shown by: J Russell Communities

5440 N. Saint Paul St.

Watermarke

This all-new plan is bold and timeless with dramatic vaulted ceilings carrying throughout the main floor. With the expansive living area and abundance of natural light, you will feel right at home!



JRussellCommunities.com

Above Ground Sq. Ft.: 1340

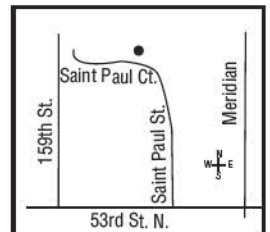
Total Sq. Ft.: 1340

School: Valley Center

Price Range: \$301-350,000

License #10954

Phone: 316-990-6585



70

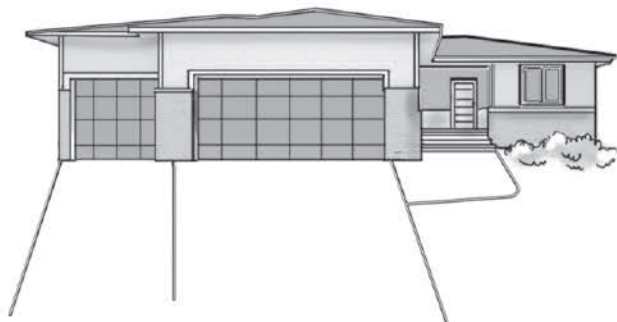
RJ Castle Custom Homes

Shown by: J Russell Communities

5444 N. Saint Paul St.

Watermarke

RJ Castle Custom Homes brings luxury and unparalleled value together with their newest model home in Beautiful Watermarke. With a luxurious owner's suite, and a wet bar in the fully finished lower level, this place will be THE place to be!



JRussellCommunities.com

Above Ground Sq. Ft.: 1330

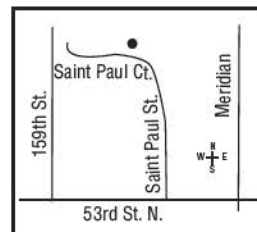
Total Sq. Ft.: 2421

School: Valley Center

Price Range: \$351-400,000

License #9734

Phone: 316-990-6585



71

Relph Construction, Inc.

Shown by: J Russell Communities

5448 N. Saint Paul St.

Watermarke

5448 N. Saint Paul St. – Relph Construction

The Weekender plan is a standout with sloped vaulted ceilings throughout the main floor and its distinct front elevation. The thoughtfully configured layout and huge 2 car tandem garage always make this plan a crowd favorite!



JRussellCommunities.com

Above Ground Sq. Ft.: 1188

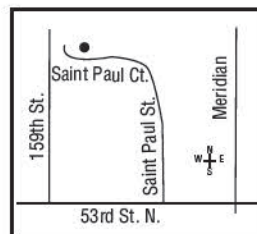
Total Sq. Ft.: 2098

School: Valley Center

Price Range: \$301-350,000

License #3344

Phone: 316-990-6585



72

Relph Construction, Inc.

Shown by: J Russell Communities

5903 N. Saint Paul Ct.

Watermarke

Relph Construction has done it again with the open livable layout of their latest model home design. The opulent owner's suite and fully finished walk-out lower level puts this home over the top!



JRussellCommunities.com

Above Ground Sq. Ft.: 1487

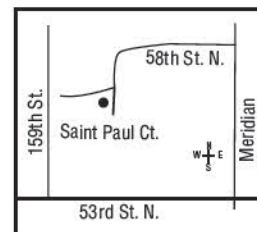
Total Sq. Ft.: 2787

School: Valley Center

Price Range: \$401-450,000

License #3344

Phone: 316-990-6585



73

RJ Castle Custom Homes

Shown by: J Russell Communities

5907 N. Saint Paul Ct.

Watermarke

This incredible new plan combines hints of yesterday's timeless mid-century flair with the crisp clean lines of today's distinct modern livability. With the well-appointed chef's kitchen and multi-tiered outdoor living spaces, you will never want to leave!

JRussellCommunities.com

Above Ground Sq. Ft.: 1330

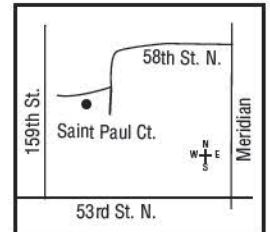
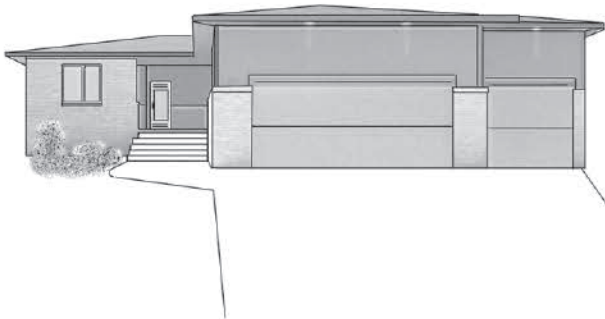
Total Sq. Ft.: 2421

School: Valley Center

Price Range: \$351-400,000

License #9734

Phone: 316-990-6585



74

M&M Custom Construction, LLC

Shown by: J Russell Communities

5911 N. Saint Paul Ct.

Watermarke

The all-new Jojo plan takes timeless architectural style and blends it into a home that fits the way people live today! With multiple living spaces...both indoors and out, the Jojo is perfect for gathering, entertaining, and just plain living!

JRussellCommunities.com

Above Ground Sq. Ft.: 1611

Total Sq. Ft.: 2520

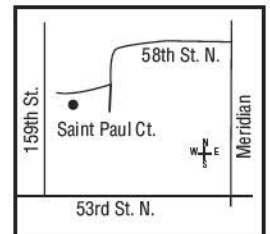
School: Valley Center

Price Range: \$401-450,000

License #7873

Phone: 316-990-6585

Blue Custom Homes



75

2610 E. 48th St. N.

Shown by: J Russell Communities

Falcon Falls

Archie Plan is a spacious Flex Plan by Blue Custom Homes offering a total of 3 bedrooms, 2 1/2 baths, large front to back kitchen with prep island, walk-in pantry, vaulted ceiling with beams with luxury vinyl plank flooring. Flex area includes 2 bedrooms, bath, sun/hearth room. There is a 3 car garage and an unfinished lower level.

JRussellCommunities.com

Above Ground Sq. Ft.: 1840

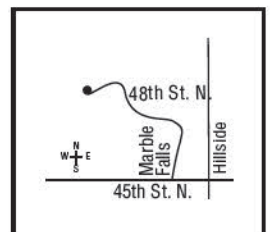
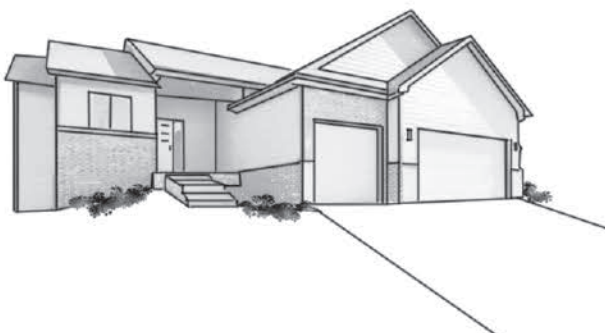
Total Sq. Ft.: 1840

School: Wichita

Price Range: \$401-450,000

License #3684

Phone: 316-461-1959



76

Rolph Construction, Inc.

Shown by: J Russell Communities

4948 N. Peregrine

Falcon Falls

Weekender plan by Rolph Construction has a total of 4 bedrooms, 2 baths, great room with decorative electric fireplace. Full, finished lower level has rec room and wet bar. Decorative overages and large tandem garage.

JRussellCommunities.com

Above Ground Sq. Ft.: 1388

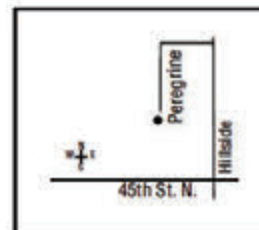
Total Sq. Ft.: 2453

School: Wichita

Price Range: \$401-450,000

License #3344

Phone: 316-461-1959



77

TW Custom Homes

Shown by: J Russell Communities

4645 N. Marblefalls Ct.

Falcon Falls

TW Custom Homes offers 5 bedroom mid-level home with vaulted great room designated dining, open kitchen with LVP flooring, quartz counter tops, covered patio for outside entertaining, full, finished lower level decorative overages and large tandem 4 car garage.

JRussellCommunities.com

Above Ground Sq. Ft.: 1408

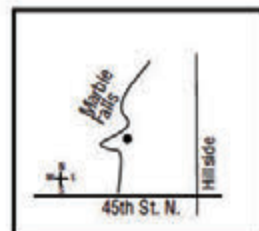
Total Sq. Ft.: 2583

School: Wichita

Price Range: \$351-400,000

License #9536

Phone: 316-461-1959



78

Russell Custom Homes

Shown by: ReeceNichols South Central Kansas

3012 E. Fairchild

Cambridge Valley

The Camryn - Quality is apparent throughout Rustic beech cabinetry built onsite, solid hickory floors, beams, wood ceiling, amazing hidden pantry, tree-lined backyard. Huge 3 car garage. Upgrades are endless! Don't miss this new 3 bedroom, 2 bath plan - so much attention to detail!

Above Ground Sq. Ft.: 1553

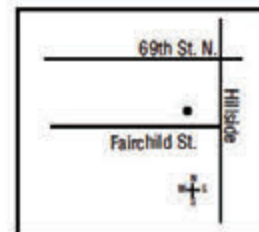
Total Sq. Ft.: 1553

School: Valley Center

Price Range: \$401-450,000

License #10194

Phone: 316-361-7372



79

Liberty Communities, LLC

Shown by: Liberty Communities, LLC

3039 Highridge Ct.

Iron Stone Village

Liberty Communities is bringing affordable homes to the area. Come check out the "independence" which has 3 bedrooms, 2 baths and it will be turnkey, complete with appliances, irrigation, landscaping to meet HOA requirements and blinds.



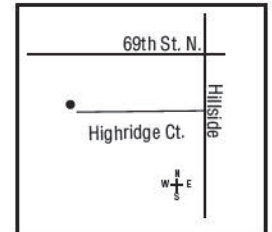
Above Ground Sq. Ft.: 1450
Total Sq. Ft.: 1450

School: Valley Center

Price Range: \$201-250,000

License #11093

Phone: 515-577-9187



80

Chapman Custom Homes

Shown by: Banister Real Estate, LLC

6844 E. Pheasant Ridge St.

Central Park - The Landing

This new build by Chapman Custom Homes offers 5 bedrooms, and 3 bathrooms complete with a finished basement and 3 car garage. The main floor boasts an opening living space and desirable split-bedroom design. All of that nestled in the beautiful, unique Central Park neighborhood.



centralparkbelaire.com

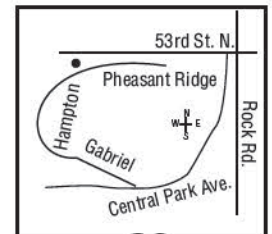
Above Ground Sq. Ft.: 1418
Total Sq. Ft.: 2421

School: Wichita

Price Range: \$351-400,000

License #5613

Phone: 620-755-1619



81

RJ Castle Custom Homes

Shown by: The Platinum Group of Keller Williams Signature Partners

8485 E. Deer Run

Deer Run

Zero entry with 4 bedrooms, 2 1/2 bath and oversized garage with 4th garage door that goes out the back!! Dramatic entry with custom wood trim finishes. Kitchen has oversized island, gas cooktop, soft close cabinets and large pantry! Living room has statement fireplace with designer coffered ceiling with beams and wall of windows. Spa-like master bathroom with 10' counter top, double sinks, and free standing tub and walk in shower. You're going to fall in love with this home!



Deer-runproperties.com

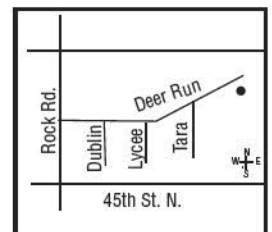
Above Ground Sq. Ft.: 2306
Total Sq. Ft.: 2306

School: Wichita

Price Range: \$401-450,000

License #9734

Phone: 316-303-4835



82**Relph Construction, Inc.**

Shown by: Keller Williams Signature Partners

5273 Pebblecreek

Rock Spring

This 4 bedroom, 3 bath home sits on a corner lot with a lake view. The home features luxury vinyl plank flooring. Electric fireplace, quartz countertops. Kitchen island and separate laundry room. The master bath has a tile shower. Finished viewout basement and a deck.

**taradevelopments.com**

Above Ground Sq. Ft.: 1208

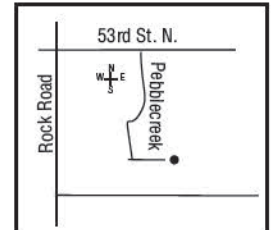
Total Sq. Ft.: 2258

School: Wichita

Price Range: \$351-400,000

License #3344

Phone: 316-650-8677

**83****Ritchie Building Co., LLC**

Shown by: Ritchie Associates, LLC

11609 E. Winston St.

Brookfield

Ritchie Building Co., LLC newest plan....the Aria! Come see why everyone loves our model with a bonus plan...so many possibilities...bedroom, playroom, sewing room, you name it! Grand kitchen with very spacious pantry! Large master closet opens to the laundry room. Brookfield....East Wichita's best new home spot!

**RitchieDevelopment.com**

Above Ground Sq. Ft.: 2538

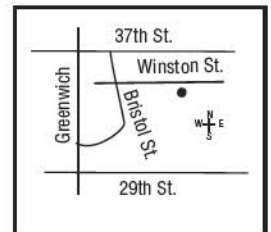
Total Sq. Ft.: 4063

School: Benton

Price Range: \$651-700,000

License #505

Phone: 316-253-0405

**84****Fahsholtz Construction, Inc.**

Shown by: Ritchie Associates, LLC

11610 E. Winston St.

Brookfield

We love Fahsholtz brand new plan! Barrel vault ceiling, extraordinary trim, and detail work throughout. This one has a great basement that is different than you've seen! Brookfield has just opened a new cul-de-sac of homesites with lake views! Come visit our 4 brand new models making their debut Fall 2023!

**RitchieDevelopment.com**

Above Ground Sq. Ft.: 2031

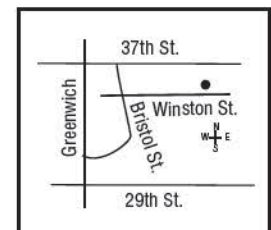
Total Sq. Ft.: 3698

School: Benton

Price Range: \$651-700,000

License #4021

Phone: 316-253-0405



85

Craig Sharp Homes, Inc.

Shown by: Ritchie Associates, LLC

11613 E. Winston St.

Brookfield

Craig Sharp's Summerset Breeze plan! 3 beds, or 2 beds plus office on the main level! Kitchen overlooks backyard. This home has a popular lanai off the back of the home with a fireplace! There is a large game room off the rec room in the basement. Come see all the trim detail and built-ins in this home!



RitchieDevelopment.com

Above Ground Sq. Ft.: 2033

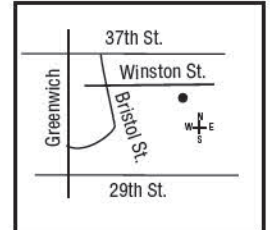
Total Sq. Ft.: 3694

School: Benton

Price Range: \$651-700,000

License #567

Phone: 316-253-0405



86

Nies Homes, Inc.

Shown by: Ritchie Associates, LLC

11614 E. Winston St.

Brookfield

Nies Homes new model at Brookfield is sure to impress! What else do you need...3 beds, office, 1/2 bath on main floor. Large patio. Two more beds in basement with their own baths...perfect for guests or teenagers! Come see the hot area of town that Brookfield is located in!



RitchieDevelopment.com

Above Ground Sq. Ft.: 1951

Total Sq. Ft.: 3393

School: Benton

Price Range: \$751-800,000

License #469

Phone: 316-253-0405



87

Perfection Builders, LLC

Shown by: PB Realty

11826 E. Winston St.

Courtyards at Brookfield

The Torino is an incredible, expansive home with features built to your exact specifications. With plenty of room for your oversized sofas, large dining room table, and room to spare, this elegant and wide open home allows you to easily and comfortably host friends and family. Look no further than the Torino!



Courtyardsatbrookfield.com

Above Ground Sq. Ft.: 2035

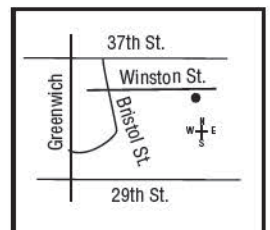
Total Sq. Ft.: 2035

School: Circle

Price Range: \$451-500,000

License #359102

Phone: 316-706-4685



88

Ritchie Building Co., LLC

Shown by: Ritchie Associates, LLC

12079 E. Shadowridge St.

Firefly

True craftsmanship shines through in this patio home by Ritchie Building Co. The living/dining area is well-lit by the large windows leading out to the screened-in covered porch. Laundry room doubles as a concrete storm room. Maintenance-free living at its finest!



RitchieDevelopment.com

Above Ground Sq. Ft.: 1810

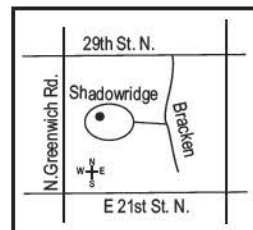
Total Sq. Ft.: 1810

School: Circle

Price Range: \$401-450,000

License #505

Phone: 706-0605



89

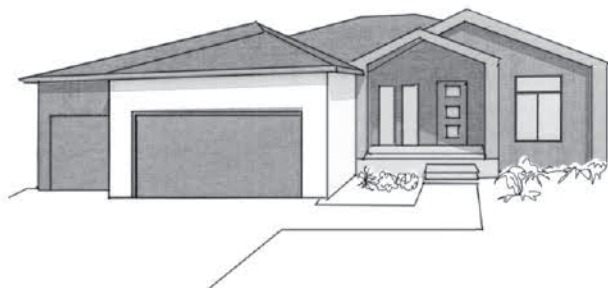
Paul Gray Homes, LLC

Shown by: Ritchie Associates, LLC

12325 E. Woodspring Ct.

Firefly

The new Socora plan is an entertainer's dream! It boasts a living area that features an electric fireplace with a wood and smoked glass accent wall. Enjoy evenings out on the covered concrete patio. Other options include a wet bar and glass enclosed wine room in basement. Pure luxury!



RitchieDevelopment.com

Above Ground Sq. Ft.: 1706

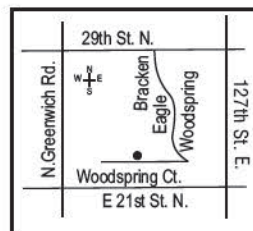
Total Sq. Ft.: 3208

School: Circle

Price Range: \$551-600,000

License #6995

Phone: 706-0605



90

Buckert Contracting, Inc.

Shown by: Ritchie Associates, LLC

12329 E. Woodspring Ct.

Firefly

Introducing the new Hampton plan! Walk in the light filled living area to see the gas fireplace and built-ins. Master suite impresses with tray ceiling and beams. You'll have plenty of storage in the walk through pantry in the kitchen. Basement features wet bar and optional office.



RitchieDevelopment.com

Above Ground Sq. Ft.: 1695

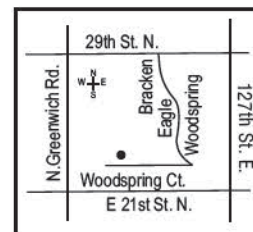
Total Sq. Ft.: 2775

School: Circle

Price Range: \$501-550,000

License #5442

Phone: 706-0605



91

Prairie Construction, LLC

Shown by: Ritchie Associates, LLC

12333 E. Woodspring Ct.

Firefly

The updated Eden plan will make you say wow from the start! The perfect family home, it has a 448 sq. ft. bonus space over the garage. Other features include a loft area upstairs, a pocket office with desk and wet bar in basement. This 5 bedroom, 3.5 bath home will give everyone plenty of room to relax!

RitchieDevelopment.com

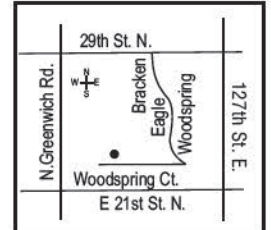
Above Ground Sq. Ft.: 2655
Total Sq. Ft.: 3752

School: Circle

Price Range: \$601-650,000

License #2116

Phone: 706-0605



92

Nies Homes, Inc.

Shown by: Keller Williams Signature Partners

2307 N. Sagebrush St.

The Trails at Freestone

The new modern Monarch floor plan boasts 4 bedrooms and 3 baths, creating a spacious oasis. Large sliding glass doors lead to an outdoor living area. The open concept design allows for plenty of natural light to flood the home, creating a warm and inviting atmosphere. Visit the brand-new Freestone community in northeast Wichita.

freestoneliving.com

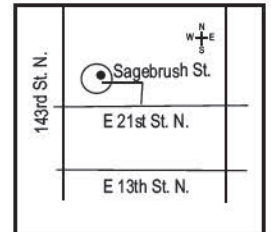
Above Ground Sq. Ft.: 1886
Total Sq. Ft.: 3296

School: Andover

Price Range: \$701-750,000

License #469

Phone: 316-452-0106



93

Nies Homes, Inc.

Shown by: Keller Williams Signature Partners

2313 N. Sagebrush St.

The Trails at Freestone

The new Linden floor plan is a dream come true with its 5 bedrooms, 3.5 baths, and modern arches. The split garage adds an extra touch of convenience, while the luxury owner's suite will have you feeling like royalty. Visit the brand-new Freestone community in northeast Wichita.

freestoneliving.com

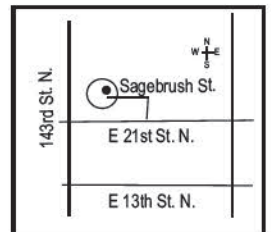
Above Ground Sq. Ft.: 2200
Total Sq. Ft.: 3888

School: Andover

Price Range: \$751-800,000

License #469

Phone: 316-452-0106



94

Nies Homes, Inc.

Shown by: Keller Williams Signature Partners

2317 N. Sagebrush St.

The Trails at Freestone

The stunning new Zinnia floor plan is sure to take your breath away! With 4 spacious bedrooms and 3.5 baths, there's room for everyone to stretch out and relax. The grand entryway sets the stage for the rest of this palatial home, and the split garage is a convenient touch. But the real showstopper is the chef's kitchen. Visit the brand-new Freestone community in northeast Wichita.



freestoneliving.com

Above Ground Sq. Ft.: 2285

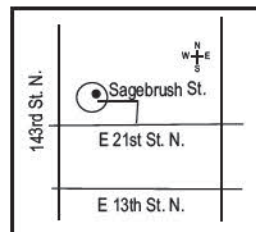
Total Sq. Ft.: 4023

School: Andover

Price Range: \$801-850,000

License #469

Phone: 316-452-0106



95

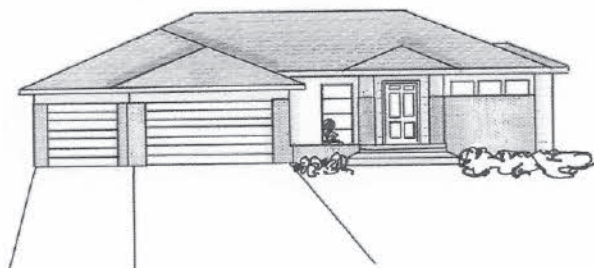
Craig Sharp Homes, Inc.

Shown by: Ritchie Associates, LLC

1226 W. Lakeway Ct.

Cornerstone

"The Willow" built by Craig Sharp Homes. Mid-century modern design. Open floor plan. Master suite with stunning bathroom and walk-in closet attached to laundry room. Finished basement with 2 bedrooms, full bath, rec room and wet bar. Near Martin Elementary in Andover School District. 3 community pools and park.



RitchieDevelopment.com

Above Ground Sq. Ft.: 1767

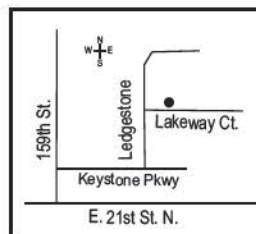
Total Sq. Ft.: 3086

School: Andover

Price Range: \$551-600,000

License #567

Phone: 360-791-1853



96

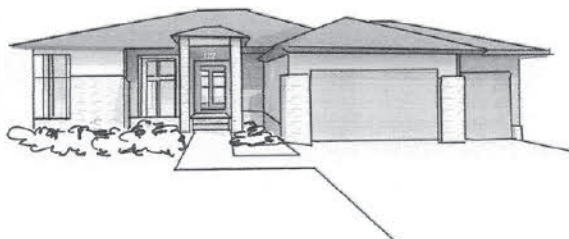
Paul Gray Homes, LLC

Shown by: Ritchie Associates, LLC

1232 W. Lakeway Ct.

Cornerstone

"The Valencia" built by Paul Gray Homes. Oversized windows. High ceilings. Living room opens to a flex room. Covered raised concrete patio. Master bath with tub and shower. Finished basement with rec room, wet bar, 2 bedrooms and full bath. Near Martin Elementary in Andover School District. 3 community pools and park.



RitchieDevelopment.com

Above Ground Sq. Ft.: 1956

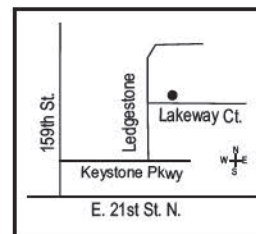
Total Sq. Ft.: 3039

School: Andover

Price Range: \$601-650,000

License #6995

Phone: 360-791-1853



97

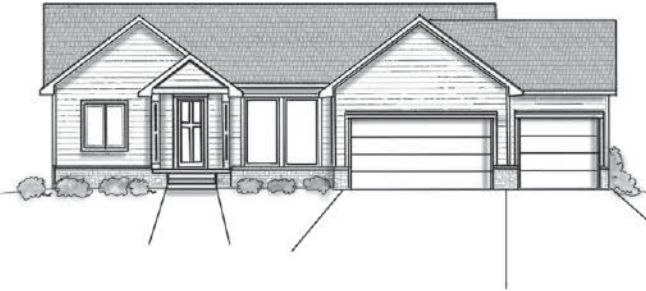
Prairie Construction, LLC

Shown by: Ritchie Associates, LLC

2549 N. Bluestone St.

Cornerstone

"The Autumn" by Prairie Construction. Open floor plan with 3 bedrooms, 2 baths. Beautiful master suite with barn door, tiled shower, floating vanities and walk-in closet. Covered patio. 3-car garage. Unfinished Basement. Near Martin Elementary in Andover School District. 3 community pools and park.



RitchieDevelopment.com

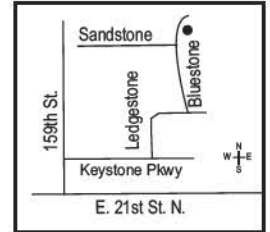
Above Ground Sq. Ft.: 1618
Total Sq. Ft.: 1618

School: Andover

Price Range: \$451-500,000

License #2116

Phone: 360-791-1853



98

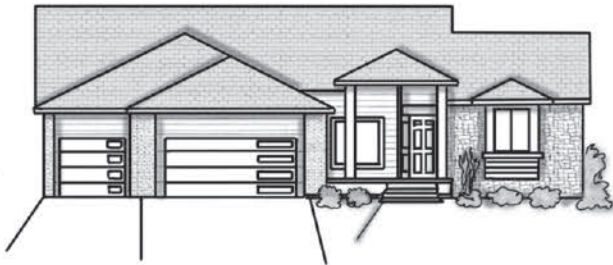
Moeder Construction

Shown by: Ritchie Associates, LLC

2605 N. Bluestone St.

Cornerstone

"The Riverton III" by Moeder Construction. Modern exterior look with hip roof. 3 bedrooms, 2 baths. Vaulted ceilings with wood beams. Kitchen has oversized island, coffee bar and walk-in pantry. Raised concrete covered patio. 3-car garage. Unfinished basement. Near Martin Elementary in Andover School District. 3 community pools and park.



RitchieDevelopment.com

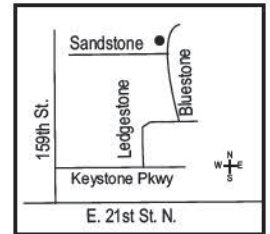
Above Ground Sq. Ft.: 1540
Total Sq. Ft.: 1540

School: Andover

Price Range: \$351-400,000

License #523

Phone: 360-791-1853



99

Willco Construction

Shown by: Ritchie Associates, LLC

2611 N. Bluestone St.

Cornerstone

"The Indigo" by Willco Construction. Spacious 3 bedrooms, 2 baths. Vaulted ceilings with wood beams. 13' ceilings in dining. Covered patio. 3-car garage. Unfinished basement with option for 3 additional bedrooms. Near Martin Elementary in Andover Andover School District. 3 community pools and park.



RitchieDevelopment.com

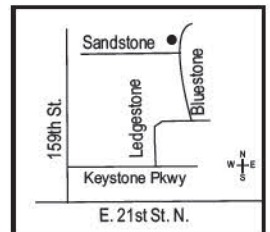
Above Ground Sq. Ft.: 1654
Total Sq. Ft.: 1654

School: Andover

Price Range: \$451-500,000

License #7319

Phone: 360-791-1853



100

Perfection Builders, LLC

Shown by: PB Realty

203 W. Pepper Tree Rd.

Courtyards at Cornerstone

Magnificent zero entry home in brand new Courtyards at Cornerstone. Wrap-around patio, 3 car garage, and many custom upgrades. Safe room, custom walk-in shower and lovely entertaining areas.



Courtyardsatcornerstone.com

Above Ground Sq. Ft.: 2261

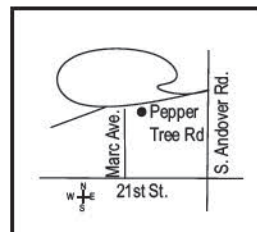
Total Sq. Ft.: 2261

School: Andover

Price Range: \$501-550,000

License #359102

Phone: 316-729-1900



101

Craig Sharp Homes, Inc.

Shown by: Ritchie Associates, LLC

2103 N. 159th Court East

Sweetgrass

A brand new plan by Sharp....the Bluestem! Grand master bathroom with large tub and master closet with large built-in island! This home has a great room, an informal family room, and lanai all on the main floor! Come see why Sweetgrass at The Province is selling so quickly!



RitchieDevelopment.com

Above Ground Sq. Ft.: 2590

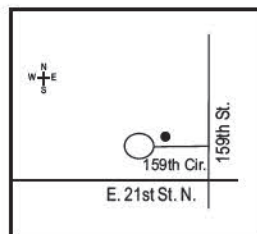
Total Sq. Ft.: 4310

School: Andover

Price Range: \$901-950,000

License #567

Phone: 253-0405



102

Paul Gray Homes, LLC

Shown by: Berkshire Hathaway HomeServices PenFed Realty

838 N. Speyside Cr.

Speyside @ Terradyne

The Tiger: a spacious 2 bedroom patio home with huge windows, climate-controlled courtyard, and motorized screens. Generous kitchen island, zero-entry master shower, versatile safe room. Premium finishes, abundant lighting - setting a new standard in patio home design.



Speysidehomes.com

Above Ground Sq. Ft.: 1840

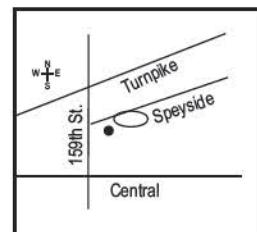
Total Sq. Ft.: 1840

School: Andover

Price Range: \$451-500,000

License #6995

Phone: 316-990-7024



103

Stovall Construction, LLC

Shown by: Stovall Construction, LLC

12715 E. Killarney St.

Country Club Court Addition

Beautiful, slab on grade ranch. Safe room, vaulted living room ceilings, office, media room, huge game room. Stone fireplaces, one interior, one exterior on 614 sq. ft. Screened in covered patio. 4 car garage/shop with EV Charging stations. Circle driveway.



stovallconstruction.net

Above Ground Sq. Ft.: 3805

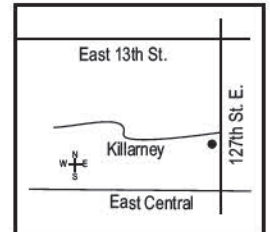
Total Sq. Ft.: 3805

School: Andover

Price Range: \$851-900,000

License #4062

Phone: 316-734-3148



104

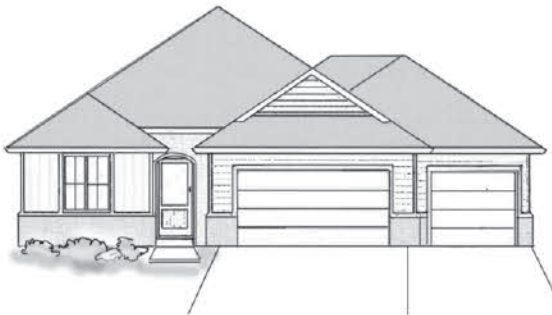
Rick Alley Homes

Shown by: Berkshire Hathaway HomeServices PenFed Realty

337 Jackson Heights Ct.

The Casitas

The Casitas is an enclave of only 16 home sites nestled in an area of upscale single family homes and patio homes. Our new patio models for sale exhibit the quality you have been looking for in your new home but haven't yet found. Visit us and take a tour. Build from your plans or ours. A preferred builder program. Built by Rick Alley Homes and Marketed by Berkshire Hathaway PenFed Realty.



Above Ground Sq. Ft.: 1761

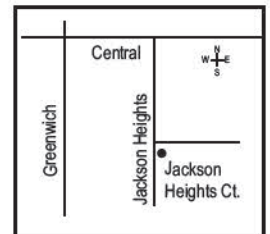
Total Sq. Ft.: 3022

School: Andover

Price Range: \$451-500,000

License #82

Phone: 316-641-4422



105

Perfection Builders, LLC

Shown by: PB Realty

145 Shay, Andover

Heritage Commons

The Sawgrass is a 4 bedroom, 2-1/2 bath home located on a premium corner lot. Master bedroom and laundry on the main level. Walk upstairs to find a huge family room with vaulted ceilings and a bonus den adjacent to the 4' bedroom. This home is a must see today!



TheHeritageAndover.com

Above Ground Sq. Ft.: 2579

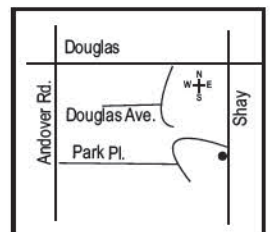
Total Sq. Ft.: 2579

School: Andover

Price Range: \$351-400,000

License #6202

Phone: 316-218-2237



106

Perfection Builders, LLC

Shown by: PB Realty

816 Park Place, Andover

Courtyards at The Heritage

This Verona in an inviting, comfortable home hallmarked by its functional layout and endless options. The thoughtful design of this home extends into every corner of every room, including the open living area, generous bathrooms and optional bonus room. When you are ready for a remarkable living experience, the Verona is capable and waiting.



Courtyardsattheheritage.com

Above Ground Sq. Ft.: 2261

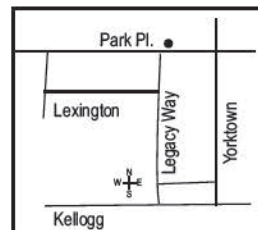
Total Sq. Ft.: 2261

School: Andover

Price Range: \$451-500,000

License #6202

Phone: 316-729-1900



107

Craig Sharp Homes, Inc.

Shown by: Flint Hills Realty Company, LLC

1506 E. Bluesage Ct.

Flint Hills National

The Cozumel Prairie plan by Craig Sharp Homes features 5 bedrooms, 5 1/2 baths, 4 car garage, fantastic kitchen, 17' ceilings in great room and a 20' stacking glass door system leading to the spacious covered lanai and outdoor fireplace that overlooks common areas. Short walk to Flint Hills National Golf Club.



flinthillsresidences.com

Above Ground Sq. Ft.: 2448

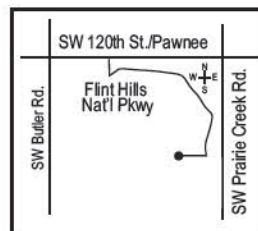
Total Sq. Ft.: 4104

School: Andover

Price Range: \$951-1M

License #10653

Phone: 316-393-2001



108

Relph Construction, Inc.

Shown by: Berkshire Hathaway HomeServices PenFed Realty

1929 S. Teakwood Ct.

Whispering Lakes

Beautiful no step no basement that backs up to a tree row and has a cement storm room in Whispering Lakes! This could be your forever home ! Come visit today!



taradevelopments.com

Above Ground Sq. Ft.: 1859

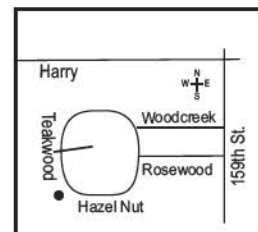
Total Sq. Ft.: 1859

School: Wichita

Price Range: \$351-400,000

License #3344

Phone: 316-640-4035



109

Relph Construction, Inc.

Shown by: Keller Williams Signature Partners, LLC

13938 E. Willowgreen Ct.

The Reserves at Sierra Hills

This 2-Story home in a gated community is filled with modern features. It has an open floor plan with LVP flooring and quartz counters. It includes 4 bedrooms, 2 fireplaces, a walk-in pantry, 2 wet bars, a rooftop terrace, covered patio, sprinkler, well and sod.



taradevelopments.com

Above Ground Sq. Ft.: 2891

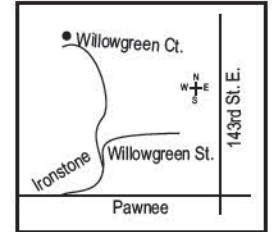
Total Sq. Ft.: 2891

School: Wichita

Price Range: \$601-650,000

License #3344

Phone: 316-619-3734



110

Miller Family Homes

Shown by: Jeff Blubaugh Real Estate

14118 E. Laguna St.

Clear Creek

Discover Clear Creek! Inspire your buying or building when you explore our new model, the Newfield! Get a glimpse of gorgeous new designer features and finishes like a fabulous fireplace, envious kitchen, storage galore throughout, basement made for entertaining and more!



millerfamilyhomes.com

Above Ground Sq. Ft.: 1680

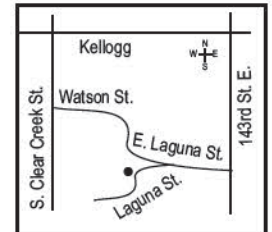
Total Sq. Ft.: 3360

School: Wichita

Price Range: \$401-450,000

License #2918

Phone: 316-250-6227



111

Open Door Custom Homes

Shown by: Keller Williams Signature Partners, LLC

2207 S. Tara Falls

Casa Bella 2nd Addition

This home features modern finishes and architecture, vaulted ceilings, LVP flooring, granite counters, large kitchen island, hidden walk-in pantry, stainless steel appliances, 4 bedrooms, 3 bathrooms, finished basement and tandem 3-car garage.



taradevelopments.com

Above Ground Sq. Ft.: 1388

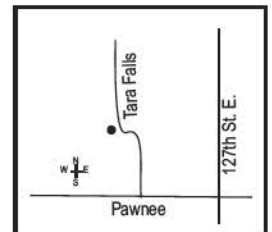
Total Sq. Ft.: 2538

School: Wichita

Price Range: \$401-450,000

License #3344

Phone: 316-619-3734



112

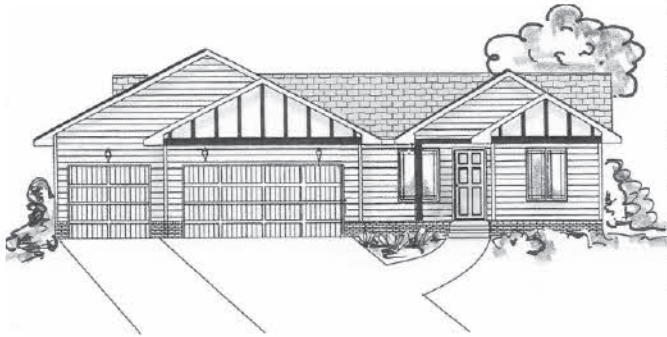
Don Klausmeyer Const., LLC

Shown by: Golden, Inc. Realtors

1822 S. Stephanie

Willow Creek East

The Justin plan features a vaulted and open living area with island kitchen and a big walk-in pantry! The split bedroom design offers privacy for all and you'll love the big master closet connecting to the main floor laundry!



newhomeswichitaks.com

Above Ground Sq. Ft.: 1261

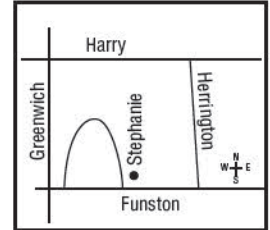
Total Sq. Ft.: 1261

School: Maize

Price Range: \$251-300,000

License #362

Phone: 316-304-8890



113

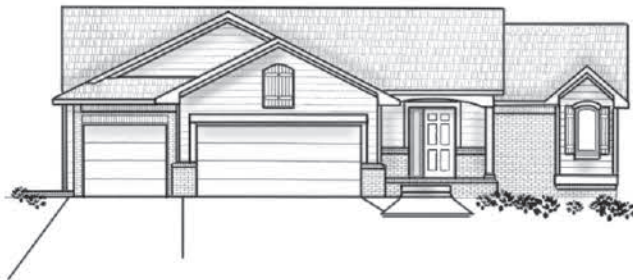
Cherrywood Construction, Inc.

Shown by: Keller Williams Signature Partners, LLC

2200 S. Chateau St.

Cedar Creek Addition

This mid-level 3 car garage floor plan has many great features - main floor has open, split bedroom plan with tall ceilings, large windows and LVP flooring throughout main living areas. Walk-in pantry, granite counters, stainless steel stove with 3 bedrooms and 2 bathrooms. Basement features rec room with wet bar, 2 bedrooms and 1 bathroom. Covered Deck! Schedule a showing today!



taradevelopments.com

Above Ground Sq. Ft.: 1334

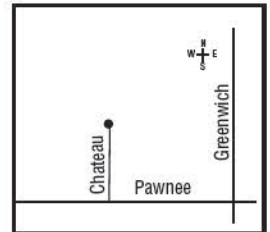
Total Sq. Ft.: 2134

School: Wichita

Price Range: \$301-350,000

License #649

Phone: 316-299-3991



114

Liberty Communities, LLC

Shown by: Liberty Communities, LLC

9202 E. Creed St.

Towne Parc

Liberty Communities is bringing affordable new homes to the area! Come check out the Washington which has 5 bedrooms, and 3 baths. It will be turnkey with an appliances, irrigation and landscaping to meet HOA requirements and blinds!



Above Ground Sq. Ft.: 1450

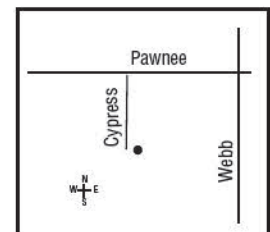
Total Sq. Ft.: 1803

School: Derby

Price Range: \$201-250,000

License #11093

Phone: 515-577-9187



115

Relph Construction, Inc.

Shown by: J Russell Communities

8536 E. Bradford

Rocky Ford

This wonderful home features 5 bedrooms, 3 baths with ceiling beams, large windows, open kitchen, dining and living room. Modern décor with quartz countertops in kitchen and baths and custom tile shower with dual sink vanities. Large wet bar with walkout feature and its own walk-in pantry, large family room, and 2 large bedrooms. All bedrooms have walk-in closets.



JRussellCommunities.com

Above Ground Sq. Ft.: 1600

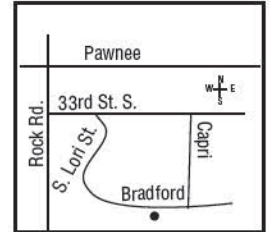
Total Sq. Ft.: 3000

School: Derby

Price Range: \$451-500,000

License #3344

Phone: 316-618-6591



116

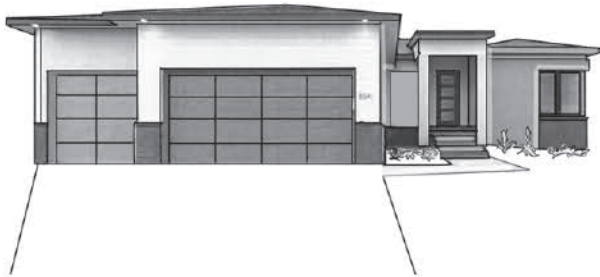
Paul Gray Homes, LLC

Shown by: J Russell Communities

8541 E. Bradford

Rocky Ford

Modern-inspired home by Paul Gray Homes. Floor to ceiling windows in kitchen and living room bring the outside in for great gathering space for family. Kitchen, dining and living has open feel with 12' ceiling, 8' island, oversized butler walk-in pantry and custom built-ins. Master bath features custom tile shower, separate soaking tub, dual sink vanities and huge walk-in closet. Huge family room and oversized bedrooms in basement.



JRussellCommunities.com

Above Ground Sq. Ft.: 1611

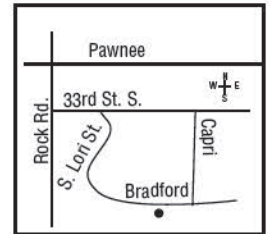
Total Sq. Ft.: 2963

School: Derby

Price Range: \$451-500,000

License #6995

Phone: 316-618-6591



117

TW Custom Homes

Shown by: J Russell Communities

8657 E. Bradford

Rocky Ford

The ultra modern Bellmare ranch plan with 5 bedrooms and 3 baths. This floor plan is a fan favorite with a larger kitchen that you will not see elsewhere that opens up to living and dining area. Impressive master suite with dual vanities, huge walk-in closet, wet room with soaker tub! Basement features wet bar and 2 more bedrooms and bath with large family room as well.



JRussellCommunities.com

Above Ground Sq. Ft.: 1554

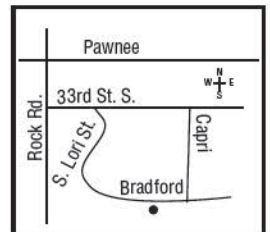
Total Sq. Ft.: 2954

School: Derby

Price Range: \$401-450,000

License #9536

Phone: 316-618-6591



118

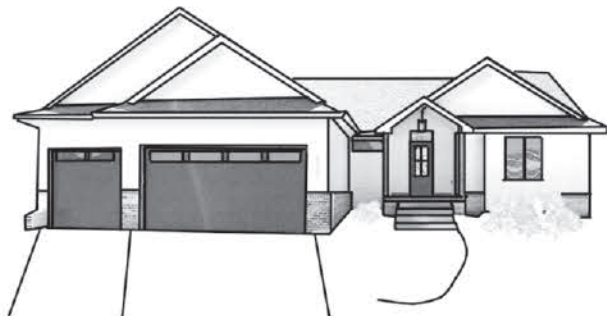
M&M Custom Construction, LLC

8761 E. Bradford

Shown by: J Russell Communities

Rocky Ford

Ultra modern 4 bedroom, 3 bath, 3 car garage flex plan. Open great room. Sun room and kitchen with built-in electric fireplace and custom built-ins. Kitchen/dining areas include large island, quartz countertop. With 10' ceilings, wood beams and luxury vinyl floors throughout. Master suite with 5' shower, separate soaker tub, walk-in closet and 2 sink vanities. Basement has large family room, 2 more bedrooms, bath and built-in wetbar!



JRussellCommunities.com

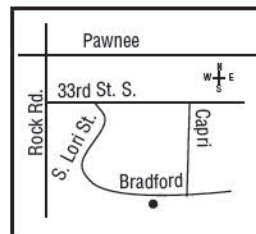
Above Ground Sq. Ft.: 1648
Total Sq. Ft.: 2648

School: Derby

Price Range: \$401-450,000

License #7873

Phone: 316-618-6591



119

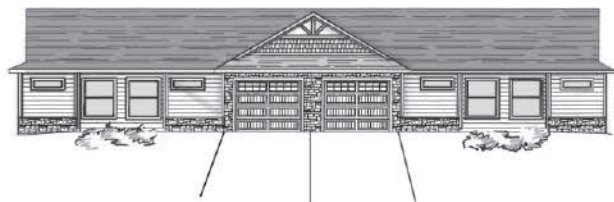
Warren Homes, LLC

320 N. Warren, Villa 701, Rose Hill

Shown by: Berkshire Hathaway HomeServices PenFed Realty

Laurel Gardens

Welcome home to this gorgeous new build! Featuring tall ceilings, an open and bright floorplan, granite countertops throughout, an abundance of storage space, and a private patio space, this maintenance free condo is a must see!



warrenhomesllc.com

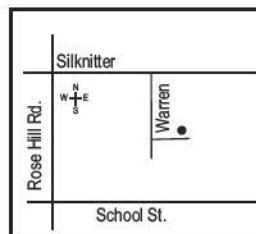
Above Ground Sq. Ft.: 1100
Total Sq. Ft.: 1100

School: Rose Hill

Price Range: \$201-250,000

License #PLGCC-000076-20

Phone: 316-207-8203



120

Rob Roy Homes, Inc.

2574 New Spring Ct., Derby

Shown by: Keller Williams Hometown Partners, LLC

Spring Ridge Add.

Open floor plan with all the must haves! Granite counters, hardwood flooring, 3 car garage, covered deck, hidden pantry in kitchen. The split bedroom floor plan has his and hers closets and sinks in master suite with separate free-standing tub and tiled shower. Enjoy 4 bedrooms, 3 baths with main floor laundry.



RobRoyHomes@att.net

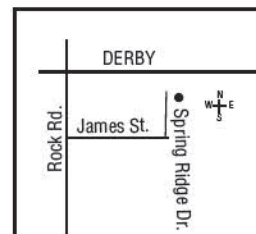
Above Ground Sq. Ft.: 1403
Total Sq. Ft.: 2203

School: Derby

Price Range: \$301-350,000

License #2007278

Phone: 316-204-4586



121

Warren Homes, LLC

2418 E. Madison, Villa 1701, Derby

Shown by: Berkshire Hathaway HomeServices PenFed Realty Madison Garden Villas

Derby's newest maintenance free community still has room for you! This incredible design features a two car garage, an open and bright floorplan, a well designed kitchen and dining room layout, ample space in the master retreat, and more! Close to Derby's amenities and boasting a clubhouse and a walking path into High Park, this community can't be beat!



warrenhomesllc.com

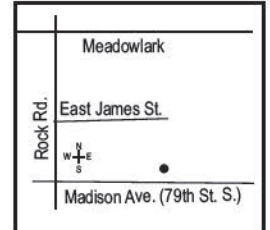
Above Ground Sq. Ft.: 1400
Total Sq. Ft.: 1400

School: Derby

Price Range: \$251-300,000

License #001828-2019

Phone: 316-207-8203



122

M&M Custom Construction, LLC

210 Cedar Ranch St.

Shown by: The Roy Group Hometown Partners, LLC

Cedar Ranch Estates

An award winning builder and his award-winning floor plan - the "Cypress"! A stunning 5 bedroom, 3 bath, 3 car garage home sitting on 3/4 acre in Cedar Ranch Estates. This home has it all - a stellar kitchen, a rec room with a luxury wet bar. Enjoy the bug-free screened-in patio for coffee or dinners.



cedarranchestates.com

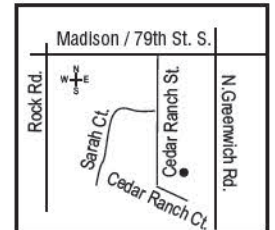
Above Ground Sq. Ft.: 2058
Total Sq. Ft.: 3826

School: Derby

Price Range: \$651-700,000

License #7873

Phone: 316-444-6691



123

Bob Cook Homes, LLC

248 Cedar Ranch St.

Shown by: The Roy Group Hometown Partners, LLC

Cedar Ranch Estates

Award-winning builder Bob Cook has gone all out on his new model! A fantastic front-facing kitchen looks across to the lake and forest, turn around looking through your vaulted screened-in porch with custom outdoor fireplace! 5 bedroom, 5 1/2 baths and bonus room with 3+ car garage.



cedarranchestates.com

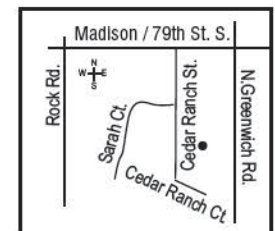
Above Ground Sq. Ft.: 2172
Total Sq. Ft.: 4581

School: Derby

Price Range: \$851-900,000

License #782

Phone: 316-444-6691



124

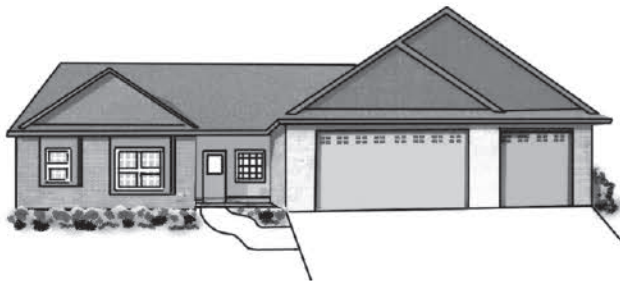
Gerald Vohs

140 E. River Birch St., Haysville

Shown by: Keller Williams Hometown Partners

Timber Creek Estates

Come and see the "Jane" floor plan! Craftsman-built no step design 12" Logix ICF exterior walls for lower energy bills, exterior features rustic brick, 600 sq. ft. covered patio area, sodded yard and landscaping. Spacious living and dining with LVP flooring in main areas, 2 on-suites great for extended stays with family. Kitchen with maple cabinets, and maple trim throughout home. French doors, 2 large patio sliding doors and so much!



nancyjosellswichita.com

Above Ground Sq. Ft.: 2070

Total Sq. Ft.: 2070

School: Haysville

Price Range: \$501-550,000

License #10926

Phone: 316-393-2551



PROPERTY FEATURES:

Affordable

- Affordable mortgages for qualified program applicants.
- No special assessments.
- Energy Star certified for maximum energy efficiency.

Spacious and Beautiful

- Ranch style, slab on grade. Fenced yard.
- Buyer's household size determines 3, 4 or 5 bedroom plans.
- Square footage ranges from 1,150-1,514 square feet.
- 1-car garage with dedicated storage alcove.

**Scan the QR code
for a virtual tour!**

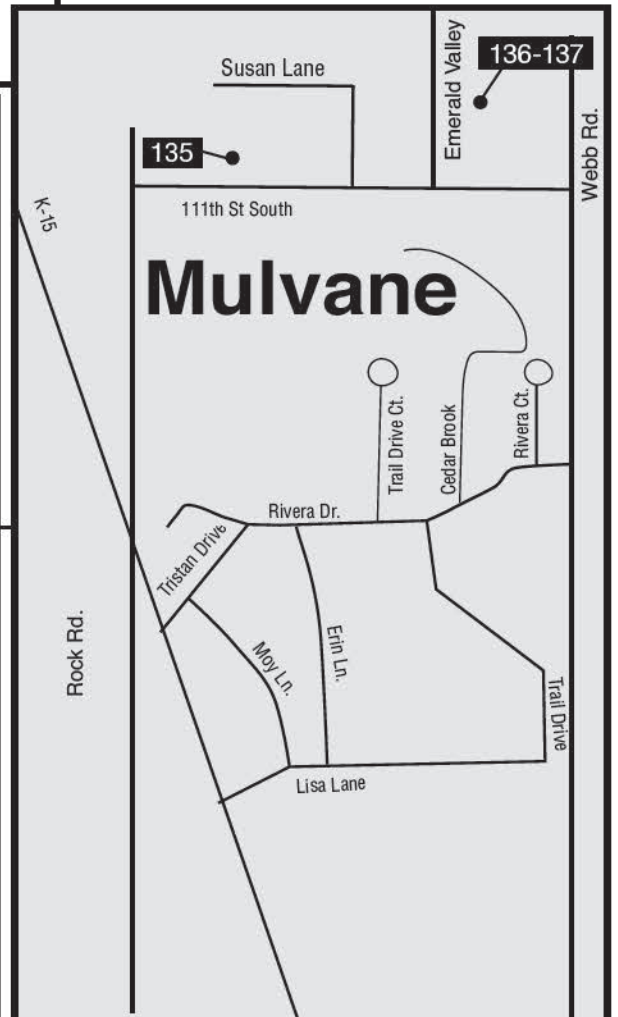
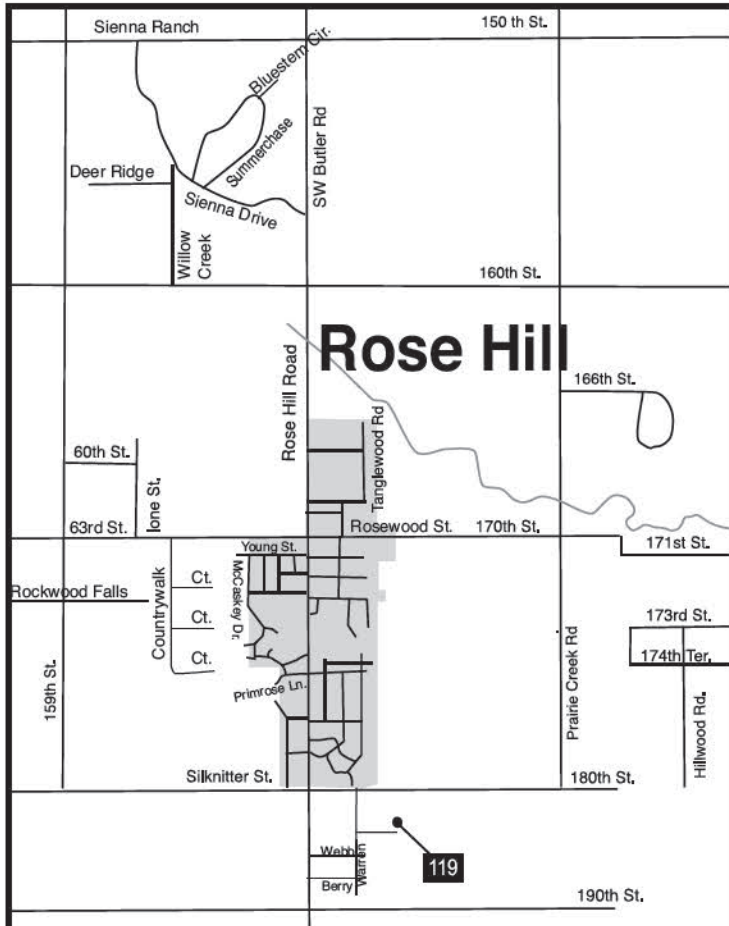
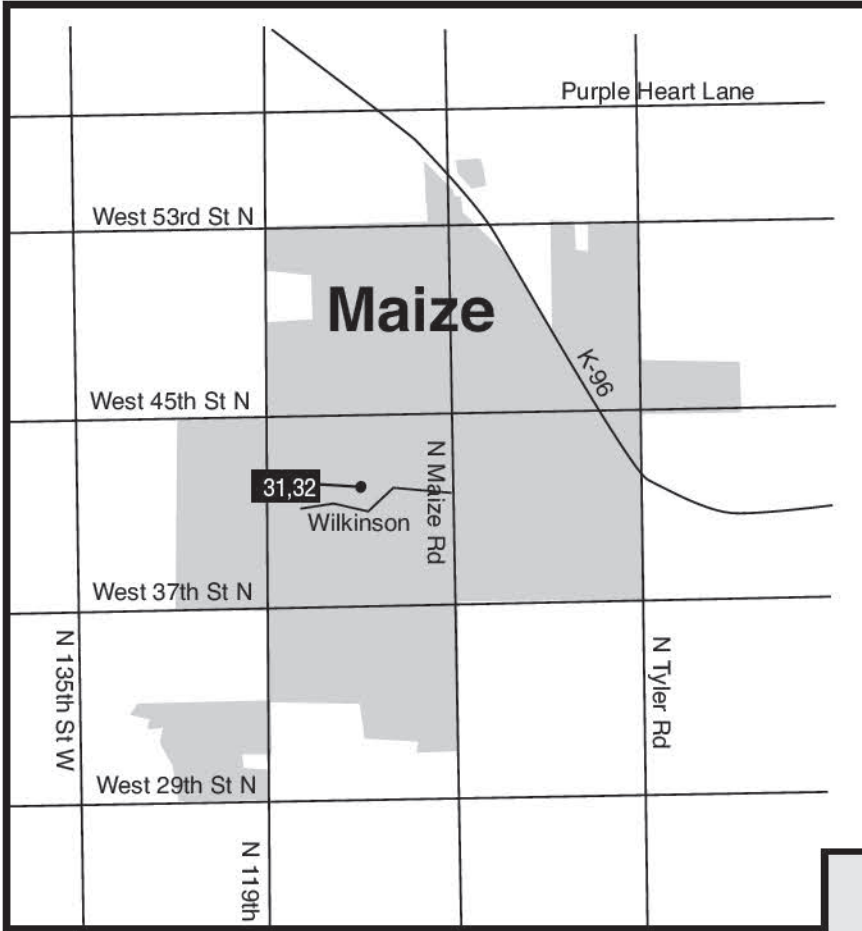
Learn more:
wichitahabitat.org
(316) 269-0755



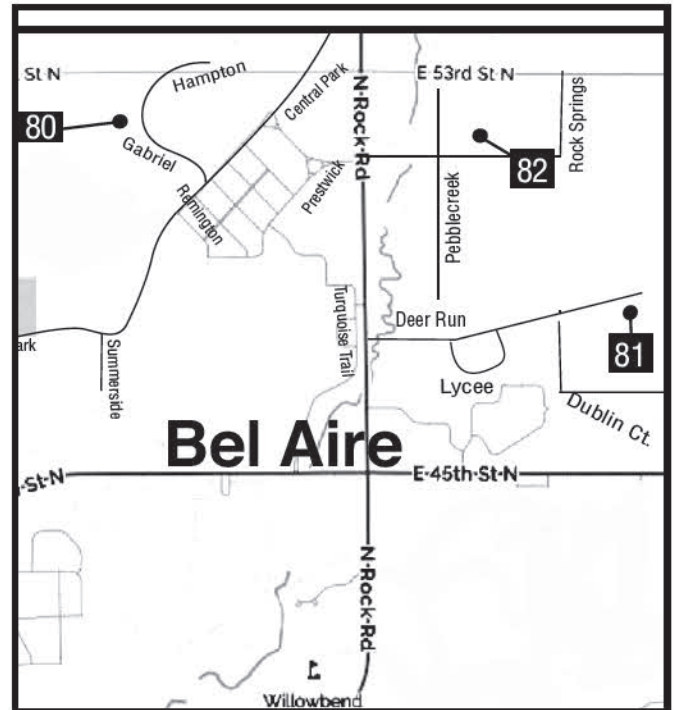
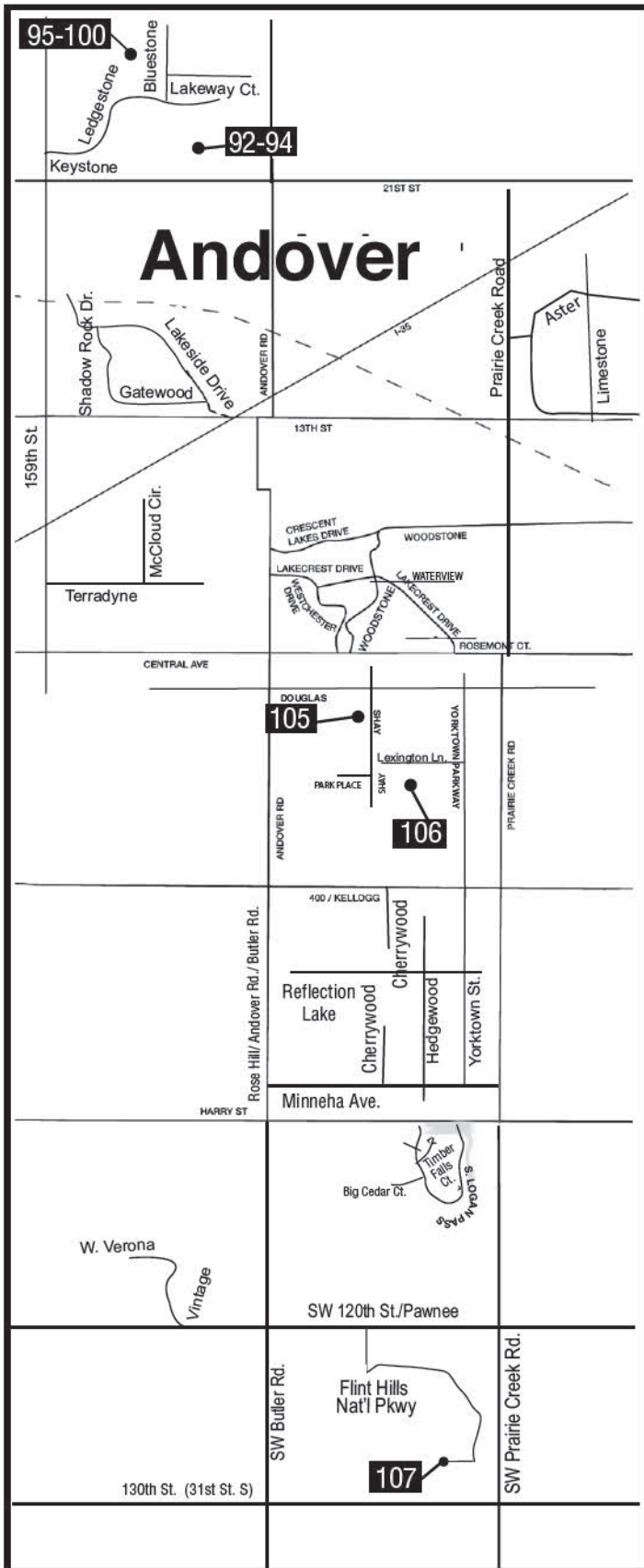
Like us
@wichitahabitat



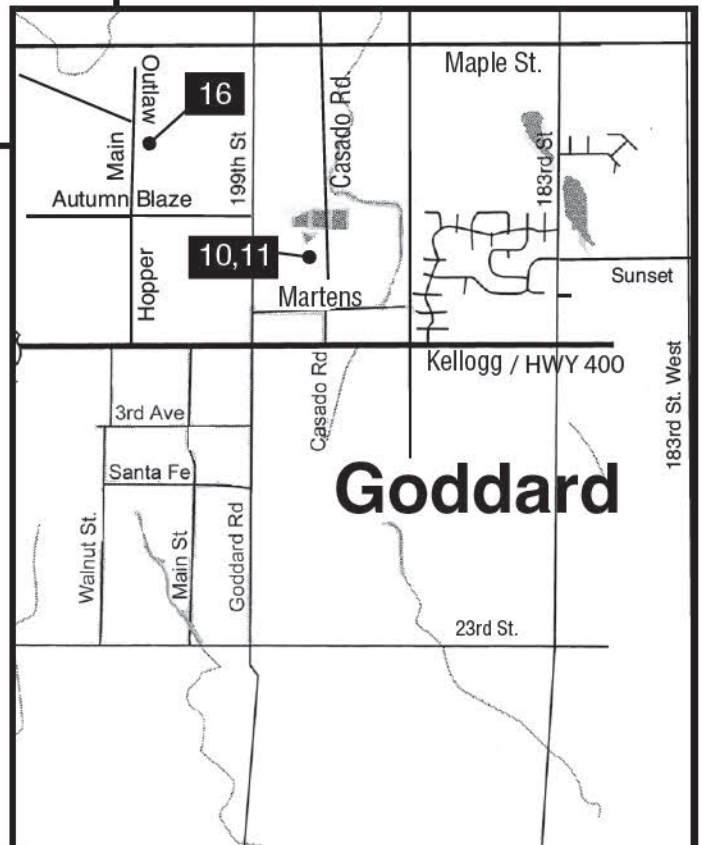
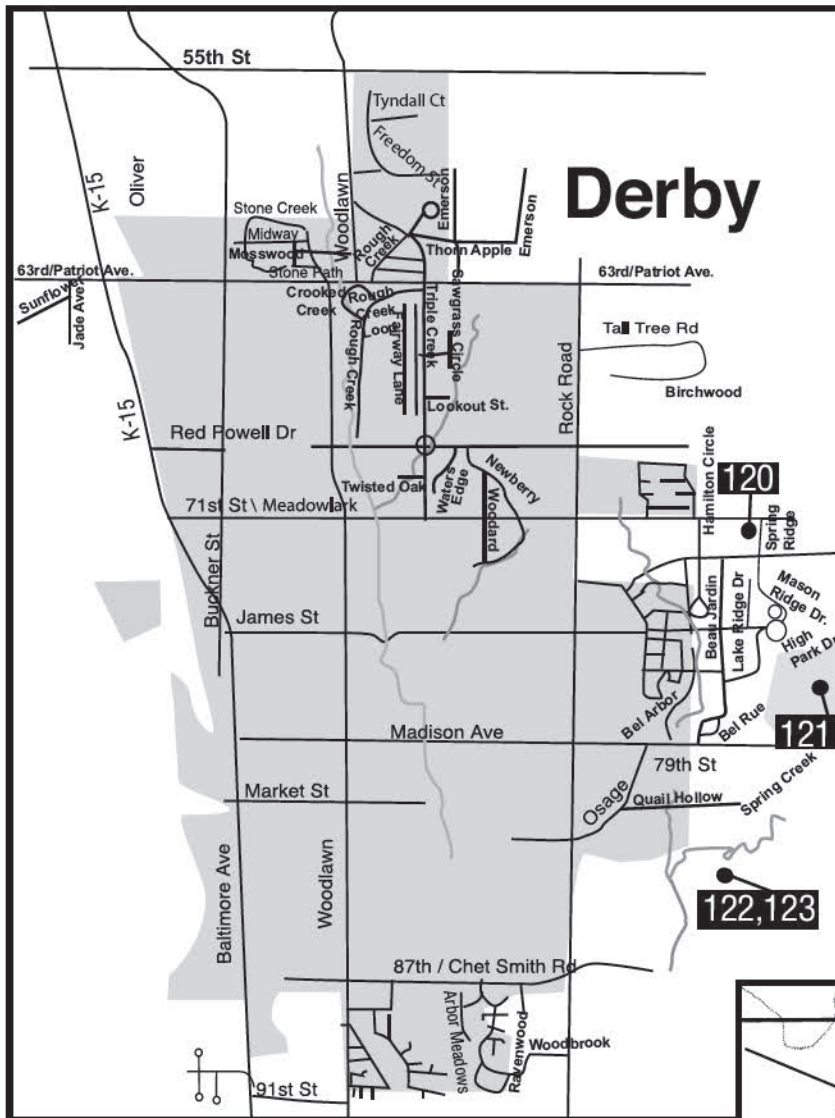
Area homes on the Fall 2023 Parade of Homes



Area homes on the Fall 2023 Parade of Homes



Area homes on the Fall 2023 Parade of Homes



Fall 2023 Parade of Homes

Lot #	Builder	Community	Address	SW	Price Range													Furnished	Home Style	Bedrooms	Full Bath	1/2 Bath	Fireplaces	Garage	Available									
					151-200	201-250	251-300	301-350	351-400	401-450	451-500	501-550	551-600	601-650	651-700	701-750	751-800									801-850	851-900	901-950	951-1 mil.	1.0-1.5 mil.	Over 1.5 mil.			
1	JK Blue Living, LLC	Southern Ridge	10405 W. Basil	SW																						YES	Ranch	5	3	0	1	3	NO	
2	Kreutzer Homes, Inc.	Southern Ridge	10409 W. Basil	SW																							YES	Ranch	5	3	0	1	3	NO
3	RJ Castle Custom Homes	Southern Ridge	10413 W. Basil	SW																							YES	Ranch	4	3	0	1	3	NO
4	TW Custom Homes	Southern Ridge	10417 W. Basil	SW																							YES	Ranch	5	3	0	1	3	NO
5	Don Klausmeyer Const, LLC	The Preserve	13516 W. Jewell	SW																						YES	Palto Home	3	2	0	1	3	NO	
6	Don Klausmeyer Const, LLC	Turkey Creek	2323 S. Hickory Creek	NW																						YES	Ranch	3	2	0	0	3	NO	
7	Don Klausmeyer Const, LLC	Turkey Creek	2327 S. Hickory Creek	NW																						YES	Ranch	3	2	0	0	3	NO	
8	Perfection Builders, LLC	The Courtyards at Auburn Lakes	1429 S. Canyon	NW																						YES	Palto Home	2	2	0	1	2	YES	
9	Steve Sailer Construction, Inc.	Dove Estates - Dove Landing	1505 S. Dove Place	SW																						NO	Palto Home	3	2	0	1	2	YES	
10	Comfort Homes, Inc.	Clover Leaf Farms	701 N. Casado St.	NW																						YES	Ranch	3	3	0	0	3	NO	
11	Don Klausmeyer Const, LLC	Clover Leaf Farms	705 N. Casado St.	NW																						YES	Ranch	3	3	0	0	3	NO	
12	Vision Custom Homes	Arbor Creek	1242 W. Ravendale	SW																						YES	Ranch	3	2	0	1	3	NO	
13	Keystone Construction	Arbor Creek	1246 W. Ravendale	SW																						YES	Ranch	3	2	0	1	3	NO	
14	Buckert Contracting, Inc.	Arbor Creek	1250 W. Ravendale	SW																						YES	Ranch	3	2	0	1	3	NO	
15	Melder Construction	Arbor Creek	1254 W. Ravendale	SW																						YES	Ranch	3	2	0	1	3	NO	
16	Reigh Construction, Inc.	Rustic Creek	1227 Main St. Goodard	SW																						NO	Palto Home	3	2	0	1	3	YES	
17	Nies Homes, Inc.	Talia	165 S. Ciderbluff Ct.	SW																						YES	Ranch	5	3	1	1	3	NO	
18	Robl Building Company	Talia	169 S. Ciderbluff Ct.	SW																						YES	Ranch	5	4	0	1	3	NO	
19	Craig Sharp Homes, Inc.	Talia	239 S. Ciderbluff Ct.	SW																						YES	Ranch	5	3	0	1	3	NO	
20	Reigh Construction, Inc.	Talia	244 S. Ciderbluff Cr.	SW																						YES	2 Story	5	3	1	1	3	NO	
21	MMB Custom Construction, LLC	Talia	248 S. Ciderbluff Cr.	SW																						YES	Ranch	5	3	0	1	3	NO	
22	TW Custom Homes	Talia	252 S. Ciderbluff Cr.	SW																						YES	Ranch	5	3	0	1	4	NO	
23	H & H Homebuilders, Inc.	Castlegate	706 N. Thornton St.	NW																						YES	Palto Home	2	2	0	1	3	NO	
24	Jim Geathart Homes, LLC	Castlegate	710 N. Thornton St.	NW																						YES	Palto Home	2	2	0	2	3	NO	
25	Mullin, Inc.	Eberly Trails	1758 N. Forestview Ct.	NW																						YES	Palto Home	3	2	0	2	2	NO	
26	Lies-Bugner Homes, LLC	Eberly Trails	1762 N. Forestview Ct.	NW																						YES	Palto Home	3	2	0	1	3	NO	
27	Lies-Bugner Homes, LLC	Eberly Trails	1766 N. Forestview Ct.	NW																						YES	Palto Home	3	2	0	1	2	NO	
28	Socora Homes, Inc.	Fontana	3110 Judith	NW																						YES	Ranch	5	3	0	1	3	YES	
29	Robl Building Company	Fontana	3114 Judith	NW																						YES	Ranch	5	3	0	1	3	YES	
30	Socora Homes, Inc.	Fontana	3132 Pine Grove Cr.	NW																						YES	Ranch	5	3	0	1	3	YES	
31	Don Klausmeyer Const, LLC	Eagle's Nest 2nd	10494 Willson, Maize	NW																						YES	Ranch	3	2	0	0	3	NO	

Note: Entries shown in the various categories are priced for sale as finished including the lot, excluding landscaping. It is important to note that the prices of other homes, which may be under construction, will vary due to the differences in lot costs and buyer-preferred options.

Fall 2023 Parade of Homes

					Price Range	Furnished	Home Style	Bedrooms	Full Bath	1/2 Bath	Fireplaces	Garage	Available
63	RJ Castle Custom Homes	Emerald Bay Estates	2579 N. Doris Cr.	NW			Ranch	5	3	1	1	3	YES
64	Paul Gray Homes, LLC	Emerald Bay Estates	4630 W. Emerald Bay Ct.	NW			Ranch	3	2	0	1	3	YES
65	RJ Castle Custom Homes	Emerald Bay Estates	4670 W. Emerald Bay Ct.	NW			Ranch	3	3	1	2	3	YES
66	H&H Homebuilders, Inc.	Sandcrest	2791 N. Curtis Ct.	NW			Ranch	3	2	0	1	3	YES
67	Trademark, Inc.	Riverside Patio Homes ADD	2021 W. Polo	NW			Patio Home	2	2	0	1	2	YES
68	TW Custom Homes	Watermark	5436 N. Saint Paul St.	NW			Ranch	5	3	0	1	3	NO
69	C&A Homes, LLC	Watermark	5440 N. Saint Paul St.	NW			Ranch	3	2	0	1	3	NO
70	RJ Castle Custom Homes	Watermark	5444 N. Saint Paul St.	NW			Ranch	4	3	0	1	3	NO
71	Reigh Construction, Inc.	Watermark	5448 N. Saint Paul St.	NW			Ranch	4	3	0	1	2	NO
72	Reigh Construction, Inc.	Watermark	5903 N. Saint Paul Ct	NW			Ranch	5	3	0	1	3	NO
73	RJ Castle Custom Homes	Watermark	5907 N. Saint Paul Ct.	NW			Ranch	4	3	0	1	3	NO
74	M&M Custom Construction, LLC	Watermark	5911 N. Saint Paul Ct.	NW			Ranch	4	3	0	1	3	NO
75	Blue Custom Homes	Falcon Falls	2610 E. 48th St. N.	NE			Ranch	3	2	1	1	3	YES
76	Reigh Construction, Inc.	Falcon Falls	4948 N. Peregrine	NE			Ranch	4	2	0	1	3	YES
77	TW Custom Homes	Falcon Falls	4645 N. Marblefalls Ct.	NE			Ranch	5	3	0	0	3	YES
78	Russell Custom Homes	Cambridge Valley	3012 E. Fairchild	NE			Ranch	3	2	0	1	3	YES
79	Liberty Communities, LLC	Iron Stone Village	3039 Highbridge Ct.	NE			Ranch	3	2	0	0	2	YES
80	Chapman Custom Homes	Central Park - The Landing	6844 E. Pheasant Ridge St.	NE			Ranch	5	3	0	1	3	YES
81	RJ Castle Custom Homes	Dear Run	8485 E. Dear Run	NE			Ranch	3	2	1	1	3	Yes
82	Reigh Construction, Inc.	Rock Spring	5273 Pebblecreek	NE			Ranch	4	3	0	1	3	YES
83	Ritchie Building Co., LLC	Brookfield	11609 E. Winston St.	NE			Ranch	5	3	1	1	3	No
84	Fainholtz Construction, Inc.	Brookfield	11610 E. Winston St.	NE			Ranch	6	3	1	1	3	NO
85	Craig Sharp Homes, Inc.	Brookfield	11613 E. Winston St.	NE			Ranch	5	3	0	2	3	NO
86	Nies Homes, Inc.	Brookfield	11614 E. Winston St.	NE			Ranch	5	4	1	1	3	NO
87	Perfection Builders, LLC	Courtyards at Brookfield	11826 E. Winston St	NE			Patio Home	2	2	0	1	2	YES
88	Ritchie Building Co., LLC	Frefly	12079 E. Shadowridge St.	NE			Patio Home	3	2	0	0	3	YES
89	Paul Gray Homes, LLC	Frefly	12325 E. Woodspring Ct.	NE			Ranch	5	3	0	1	3	NO
90	Buckert Contracting, Inc.	Frefly	12329 E. Woodspring Ct.	NE			Ranch	3	3	0	1	3	NO
91	Prairie Construction, LLC	Frefly	12333 E. Woodspring Ct.	NE			1 1/2 Story	5	3	1	1	3	NO
92	Nies Homes, Inc.	The Trails at Freestone	2307 N. Sagebrush St.	NE			Ranch	4	3	0	1	3	NO
93	Nies Homes, Inc.	The Trails at Freestone	2313 N. Sagebrush St.	NE			Ranch	5	3	1	1	3	NO

Note: Entries shown in the various categories are priced for sale as finished including the lot, excluding landscaping. It is important to note that the prices of other homes, which may be under construction, will vary due to the differences in lot costs and buyer-preferred options.

Fall 2023 Parade of Homes

Home #	Builder	Address	Neighborhood	Price Range	Over 1.5 mil.	951-1 mil.	901-950	851-900	801-850	751-800	701-750	651-700	601-650	551-600	501-550	451-500	401-450	351-400	301-350	251-300	201-250	151-200	Furnished	Home Style	Bedrooms	Full Bath	1/2 Bath	Fireplaces	Garage	Available
94	Nies Homes, Inc.	The Trails at Freestone	2317 N. Sagebrush St.	NE																			YES	Ranch	4	3	1	1	1	NO
95	Craig Sharp Homes, Inc.	Cornerstone	1226 W. Lakeway Ct.	NE									•										YES	Ranch	5	3	0	1	3	YES
96	Paul Gray Homes, LLC	Cornerstone	1232 W. Lakeway Ct.	NE									•										YES	Ranch	5	3	21	1	3	YES
97	Prairie Construction, LLC	Cornerstone	2549 N. Bluestone St.	NE										•									YES	Ranch	3	2	0	1	3	YES
98	Moeder Construction	Cornerstone	2605 N. Bluestone St.	NE										•									YES	Ranch	3	2	0	1	3	YES
99	Willco Constnuction	Cornerstone	2611 N. Bluestone St.	NE										•									YES	Ranch	3	2	0	1	3	YES
100	Perfection Builders, LLC	Courtyards at Cornerstone	203 W. Pepper Tree Rd.	NE											•								NO	Patio Home	2	2	0	1	3	YES
101	Craig Sharp Homes, Inc.	Sweetgrass	2103 N. 159th Court East	NE																			YES	Ranch	5	4	1	2	4	YES
102	Paul Gray Homes, LLC	Speyside @ Terradyne	838 N. Speyside Cr.	NE												•							YES	Patio Home	2	2	1	1	3	YES
103	Stovall Construction, LLC	Country Club Court Addition	12715 E. Killamey St.	NE																			NO	Ranch	3	2	1	2	4	NO
104	Rick Alley Homes	The Casitas	337 Jackson Heights Ct.	NE												•							YES	Patio Home	4	3	0	1	3	YES
105	Perfection Builders, LLC	Heritage Commons	145 Shay, A ndover	NE										•									YES	2-Story	4	2	1	0	2	YES
106	Perfection Builders, LLC	Courtyards at The Heritage	816 Park Place, Andover	SE												•							YES	Patio Home	2	2	0	1	2	YES
107	Craig Sharp Homes, Inc.	Flint Hills National	1506 E. Bluesage Ct.	SE																			YES	Ranch	5	5	1	1	4	YES
108	Relph Construction, Inc.	Whispering Lakes	1929 S. Teakwood Ct.	SE																			NO	Patio Home	3	2	0	1	3	YES
109	Relph Construction, Inc.	The Reserves at Sierra Hills	13938 E. Willowgreen Ct.	SE																			NO	2-Story	4	2	2	2	3	YES
110	Miller Family Homes	Clear Creek	14118 E. Laguna St	SE																			YES	Ranch	4	3	0	1	3	NO
111	Open Door Custom Homes	Casa Bella 2nd Addition	2207 S. Tara Falls	SE																			NO	Ranch	4	3	0	1	3	YES
112	Don Klausmeyer Const., LLC	Willow Creek East	1822 S. Stephanie	SE																			YES	Ranch	3	2	0	0	3	NO
113	Cherrywood Construction, Inc.	Cedar Creek Addition	2200 S. Chateau St.	SE																			YES	Ranch	5	3	0	1	3	NO
114	Liberty Communities, LLC	Towne Parc	9202 E. Creed St	SE																			YES	2-Story	5	3	0	0	2	YES
115	Relph Construction, Inc.	Rocky Ford	8536 E. Bradford	SE																			NO	Ranch	5	3	0	1	3	NO
116	Paul Gray Homes, LLC	Rocky Ford	8541 E. Bradford	SE																			YES	Ranch	5	3	0	1	3	NO
117	TW Custom Homes	Rocky Ford	8657 E. Bradford	SE																			YES	Ranch	5	3	0	1	3	NO
118	M&M Custom Construction, LLC	Rocky Ford	8761 E. Bradford	SE																			YES	Ranch	4	3	0	1	3	NO
119	Warren Homes, LLC	Laurel Gardens	320 N. Warren, Villa 701, Rose Hill	SE																			YES	Patio Home	2	2	0	0	1	YES
120	Rob Roy Homes, Inc.	Spring Ridge Add.	2574 New Spring Ct., Derby	SE																			YES	Ranch	4	3	0	0	3	YES
121	Warren Homes, LLC	Madison Garden Villas	2418 E. Madison, Villa 1701, Derby	SE																			YES	Patio Home	2	2	0	1	2	YES
122	M&M Custom Construction, LLC	Cedar Ranch Estates	210 Cedar Ranch St.	SE																			YES	Ranch	5	3	1	1	3	NO
123	Bob Cook Homes, LLC	Cedar Ranch Estates	248 Cedar Ranch St.	SE																			YES	Ranch	5	5	1	0	3	NO
124	Gerard Voets	Timber Creek Estates	140 E. River Birch St, Haysville	SW																			NO	Ranch	3	3	0	1	3	YES

Note: Entries shown in the various categories are priced for sale as finished including the lot, excluding landscaping. It is important to note that the prices of other homes, which may be under construction, will vary due to the differences in lot costs and buyer-preferred options.



Get your hands into just about everything.

Blue collar jobs aren't going away.

In fact, they're increasing. Start building your career with our hands-on programs guided by industry leaders, some complete with guaranteed internships, interviews, and 100% job placement.

Apply today for FREE!



**AUTO TECHNOLOGY | DIESEL TECHNOLOGY
CONSTRUCTION TECHNOLOGY | WELDING**

One-Year Certificate | Two-Year Degrees



NewHomesWichita.com

SEE THE WINNING HOMES!

- Award-winning homes in each price category
- Effective Design
- Kitchen Design
- Master Suite/Bath Design
- Decorating/Merchandising/Color
- Basement Design
- Landscaping Design
- Unique Features



Pick of the Parade and category award winners will be announced on Thursday, October 5, on the WABA website at **NewHomesWichita.com**





"The Chamber of Commerce for the Kansas Construction Industry"

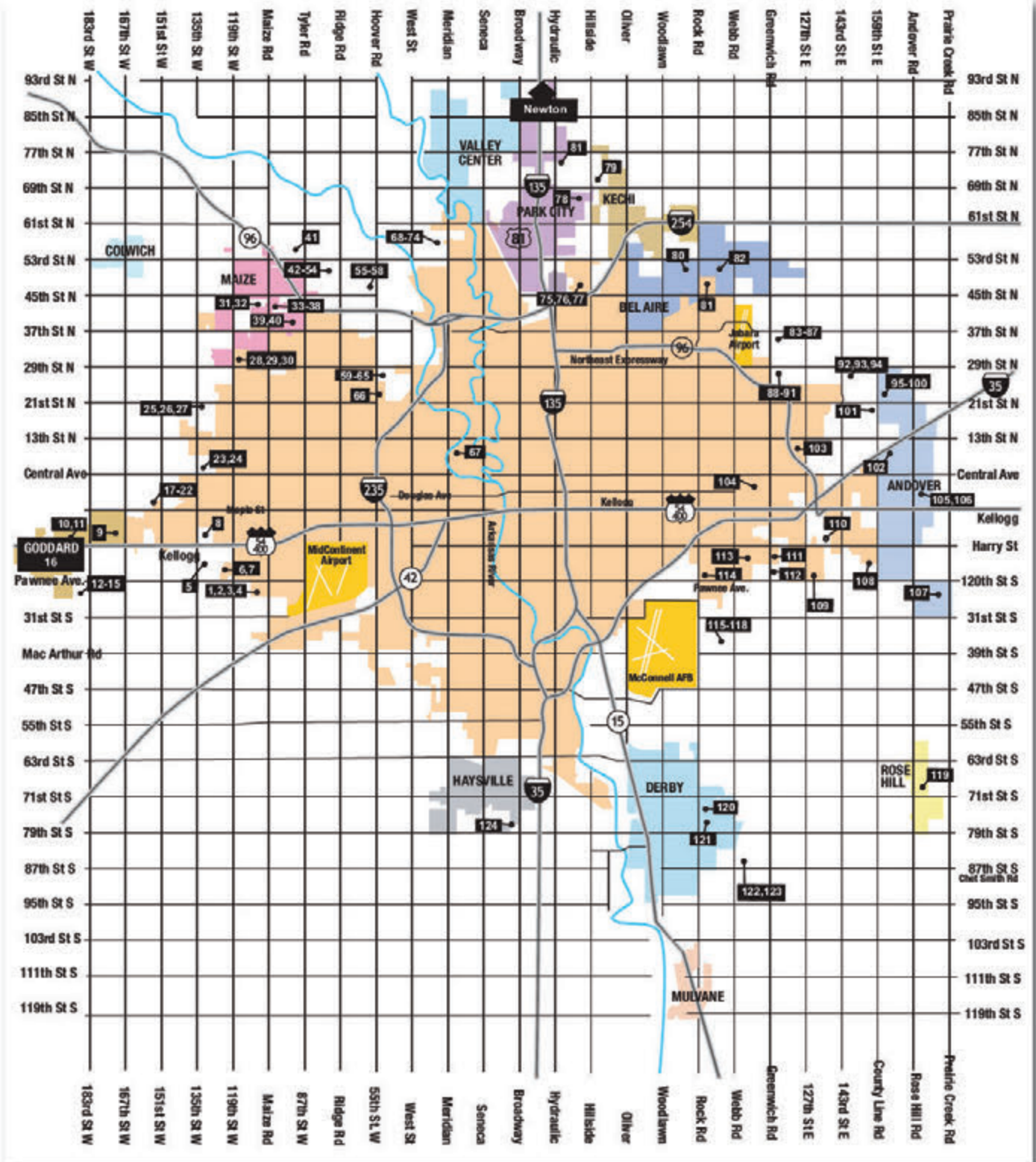
Is Your Company Looking for Construction Workers???

- AGC has a vast network of Educational Partners in many of the Kansas High-School that offer a variety of Construction Trades CTE/Vocational Programming.
- Largest Human Resource (HR) Platform for Construction Firms to Post their Job Openings directly to Kansas High-School/Community College CTE/Vocational Students.
- Construction Trade Programs offered to the industry.



www.buildupks.com

For more information, call the AGC of Kansas office at 316.928.8635



SATURDAYS & SUNDAYS NOON TO 6 PM

SEPT 30 - OCT 1, OCT 7 - 8, OCT 14 - 15



Parade of Homes

 Fall 2023



YOUR NEW HOME SEARCH MADE EASY

 24/7 VIEWING JUST A CLICK AWAY
[NewHomesWichita.com](https://www.newhomeswichita.com)

You'll never look at buying a house the same way again.

Developed by the Wichita Area Builders Association, [NewHomesWichita.com](https://www.newhomeswichita.com) is your #1 source for New Homes in the Wichita Metro area. The website is a list of New Homes and Communities that lets you search by map, builder, schools and area. It's also an assurance of the highest level of construction methods, ethics and conduct engaged in by WABA builders all in one place.

And now, it's where you'll go for all the details on the Wichita Parade of Homes entries.

Search by location. Search by style. Search by price range. **Come take a look.**

Learn more at
[NewHomesWichita.com](https://www.newhomeswichita.com)



NEW HOME? NEW PROJECTS?



You've saved and dreamed for years and now the big day is here. You own your new home!

Even with a new home there are often projects both inside and out – and Star is here to help. From completing your outdoor living space to finishing your basement, Star has a team of project specialists who can help you make the right choices from all your options.

If the project is more than you want to do yourself Star has a list of Preferred Remodelers who can get the job done.

New home? New projects? Come to Star!



Maple & West Street
316-942-2221

starlumber.com